



# WY Conditions & Outlooks:

*Precipitation, Temperatures, Drought, Floods, & Everything In-between*

---

November 18, 2021



# Presentation Outline

---

- Current Conditions
- Outlooks
- How to Get Involved



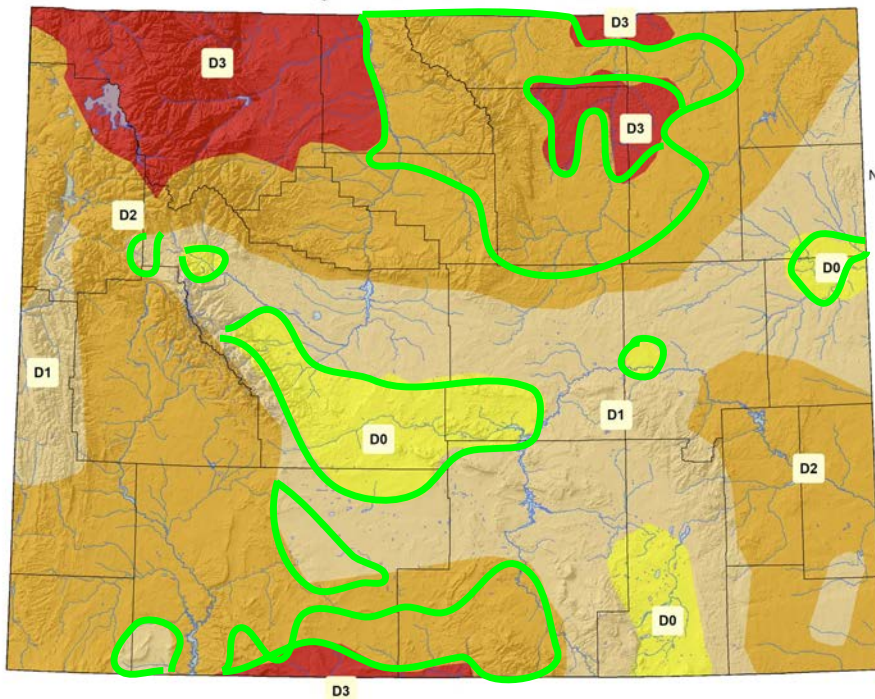
# Current Conditions

# US Drought Monitor for November 16, 2021

(Released Thursday, November 18, 2021)

Valid 8 a.m. EDT

US Drought Monitor as of 16 November 2021



**US Drought Monitor**

- D0 Abnormally Dry
- D1 Moderate Drought
- D2 Severe Drought
- D3 Extreme Drought
- D4 Exceptional Drought

Map Created by:  
National Drought Mitigation Center  
<https://droughtmonitor.unl.edu>



Map Layout Prepared by:  
Wyoming State Climate Office  
<http://www.wrds.uwyo.edu>



Drought Level	Percentile
None	>30
D0 (Abnormally Dry)	21 to 30
D1 (Moderate Drought)	11 to 20
D2 (Severe Drought)	6 to 10
D3 (Extreme Drought)	3 to 5
D4 (Exceptional Drought)	0 to 2

**Improvements** throughout the state as soil moisture improves, partly because the ground is still thawed and melting snow has been able to infiltrate the soil column.

The U.S. Drought Monitor, is a weekly map of drought conditions produced jointly by the National Oceanic and Atmospheric Administration, the U.S. Department of Agriculture, and the National Drought Mitigation Center (NDMC) at the University of Nebraska-Lincoln. The U.S. Drought Monitor website is hosted and maintained by the NDMC. <http://droughtmonitor.unl.edu>



# 14-Day Precipitation Percentile (04 Nov 2021 to 17 Nov 2021)

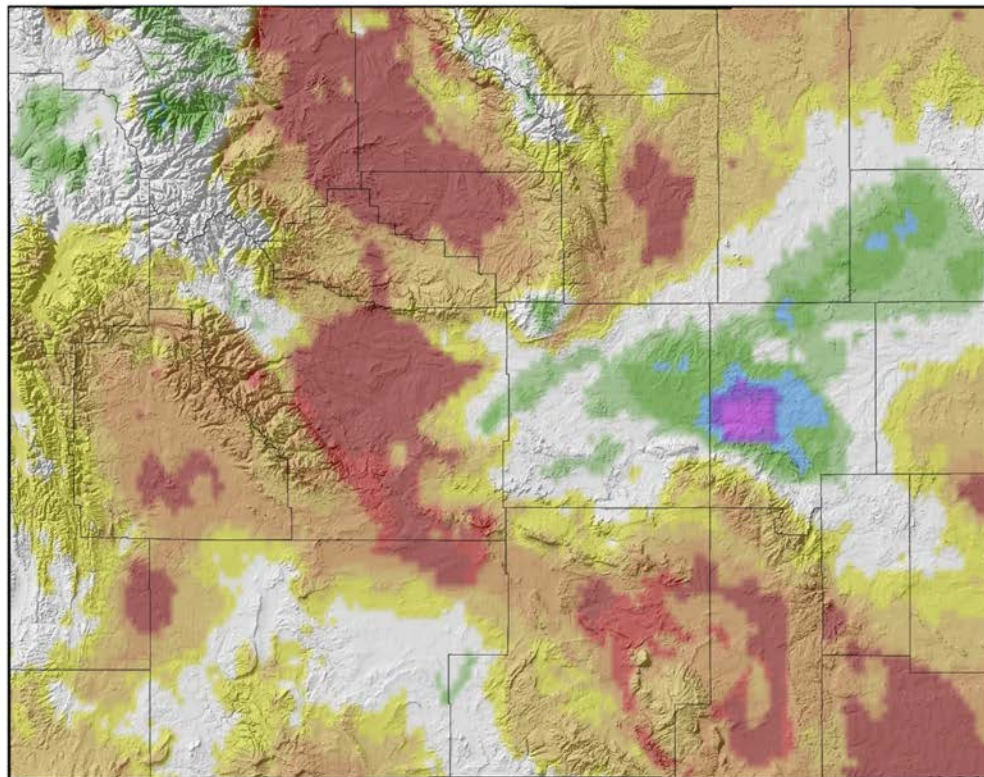
14-Day Precipitation (Percentile) for 04 Nov 2021 to 17 Nov 2021

## Above Median:

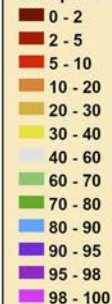
- Northwest
- East-central plains

## Below Median (Areas of Concern):

- Bighorn Basin
- Central Fremont County
- Sublette County
- Laramie Valley
- Johnson County
- E Lincoln/W Sweetwater Counties



### Precipitation Percentile



Precipitation Data  
PRISM Climate Group  
<http://prism.oregonstate.edu>



Map Prepared by:  
Wyoming State Climate Office  
<http://www.wrds.uwyo.edu>



Provisional data, subject to revision



# 90-Day Precipitation Percentile (20 Aug 2021 to 17 Nov 2021)

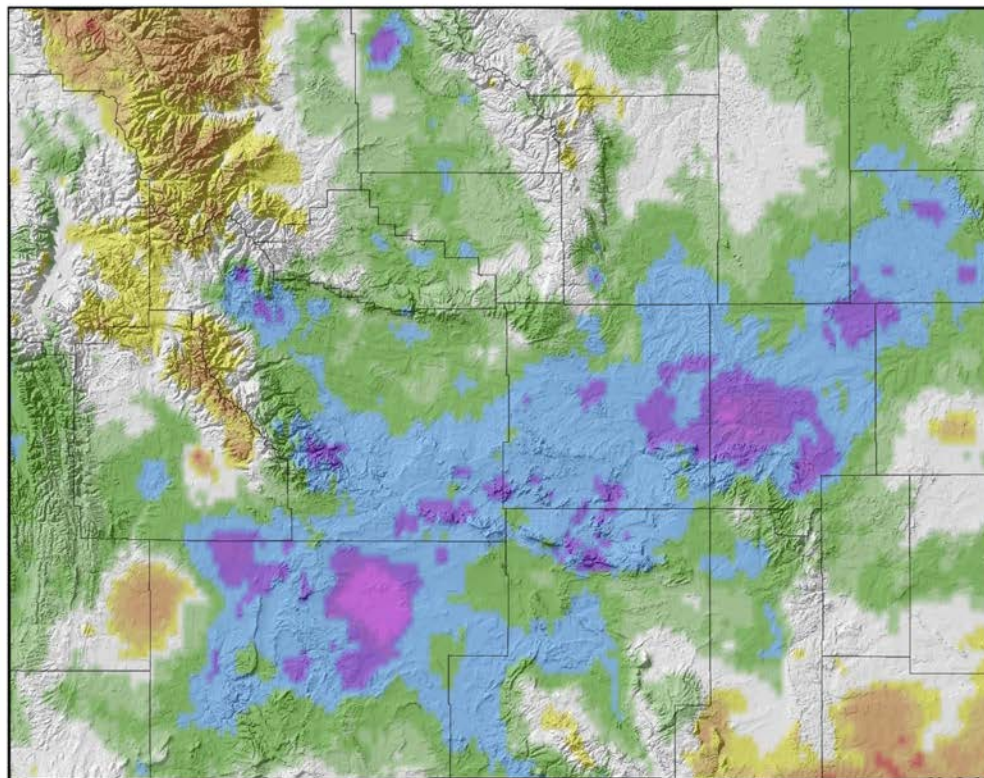
90-Day Precipitation (Percentile) for 20 Aug 2021 to 17 Nov 2021

## Above Median:

- Much of Wyoming

## Below Median (Areas of Concern):

- Laramie County
- Park County



Precipitation Data  
PRISM Climate Group  
<http://prism.oregonstate.edu>



Map Prepared by:  
Wyoming State Climate Office  
<http://www.wrds.uwyo.edu>

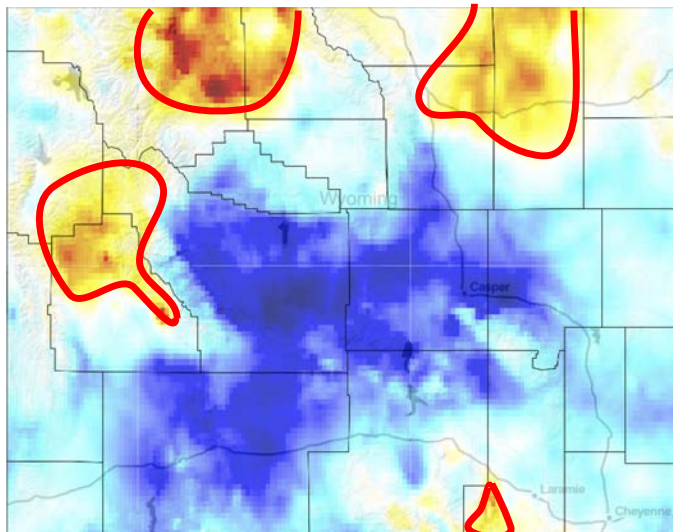


Provisional data, subject to revision

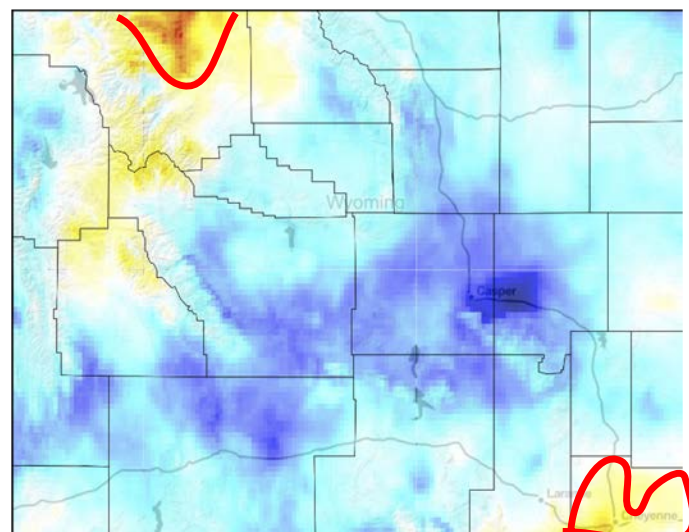
Current SPI



30-Day



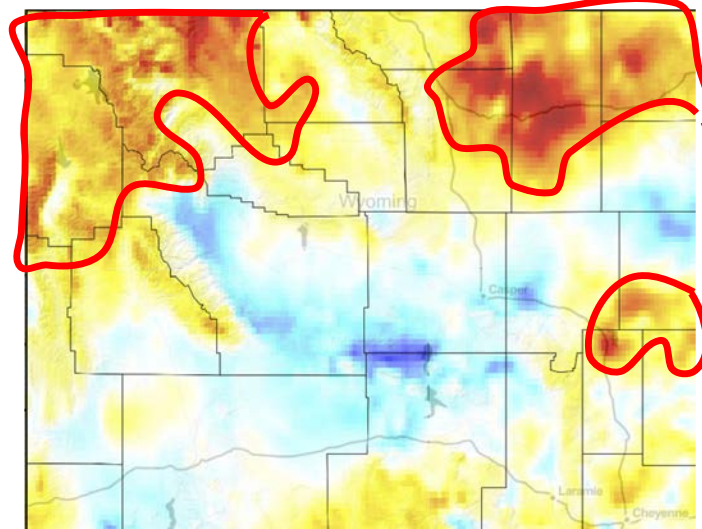
60-Day



## Standardized Precipitation Index (SPI)

- While some recent precipitation over the last month has allowed for some improvement, there are still lingering and re-emerging areas of concern.

1-Year

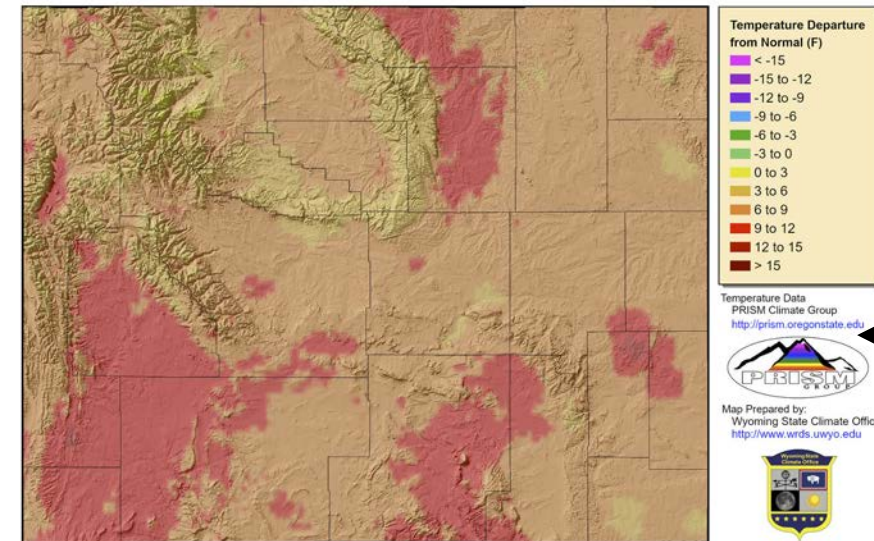




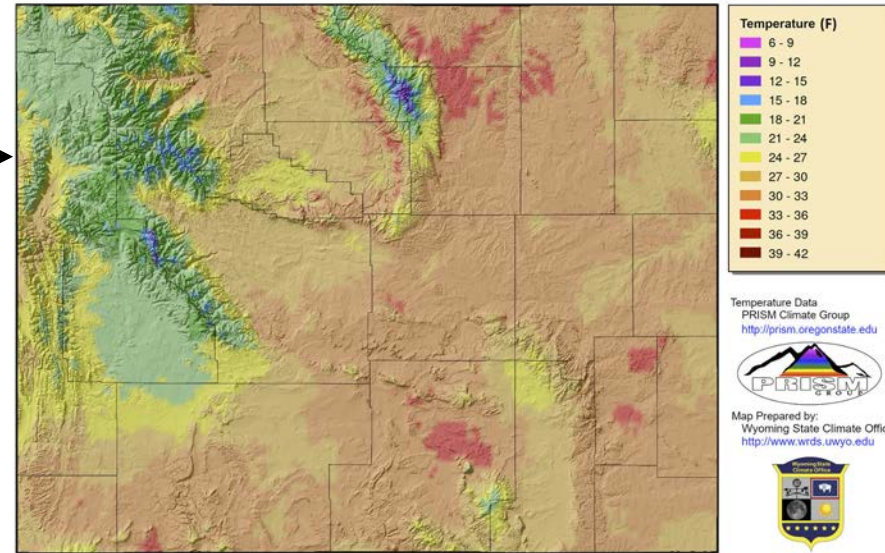
# 14-Day Average Minimum Temperature (04 Nov to 17 Nov)

- Lows mostly below freezing
- Colder in Northwest and West Central

14-Day Average Minimum Temperature (Departure from 1991-2020 Average) for 04 Nov 2021 to 17 Nov 2021



Provisional data, subject to revision



Provisional data, subject to revision

Daily Temperature data from PRISM Climate Group, Copyright ©2021, PRISM Climate Group, Oregon State University, <http://prism.oregonstate.edu>  
Map Created 18 Nov 2021 <http://www.wrds.uwyo.edu>  
Temperature averages created from PRISM daily temperature grids

# 14-Day *Departure from Normal* Average Minimum Temperature

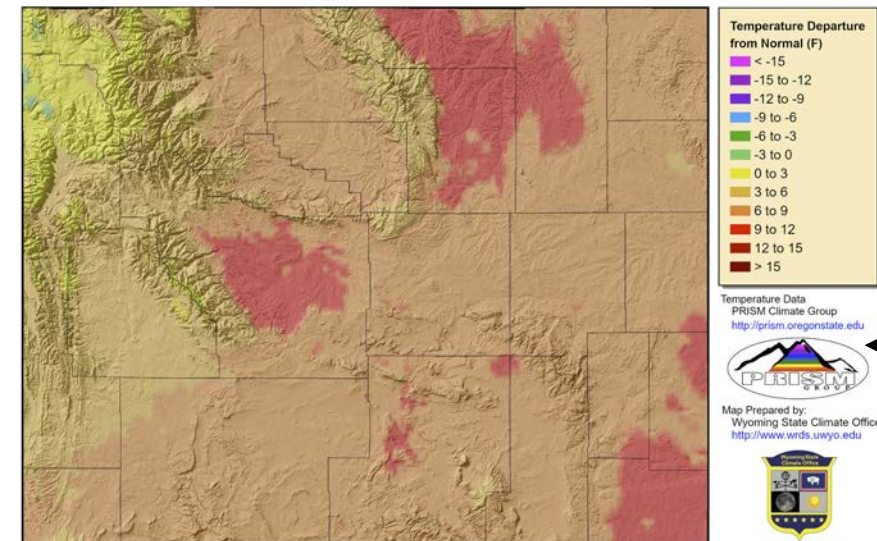
- 9F to 12F above average for southwest and south central (and just east of Bighorns)
- 6F to 9F above average for most of remainder of Wyoming except higher elevations



# 14-Day Average **Maximum** Temperature (04 Nov to 17 Nov)

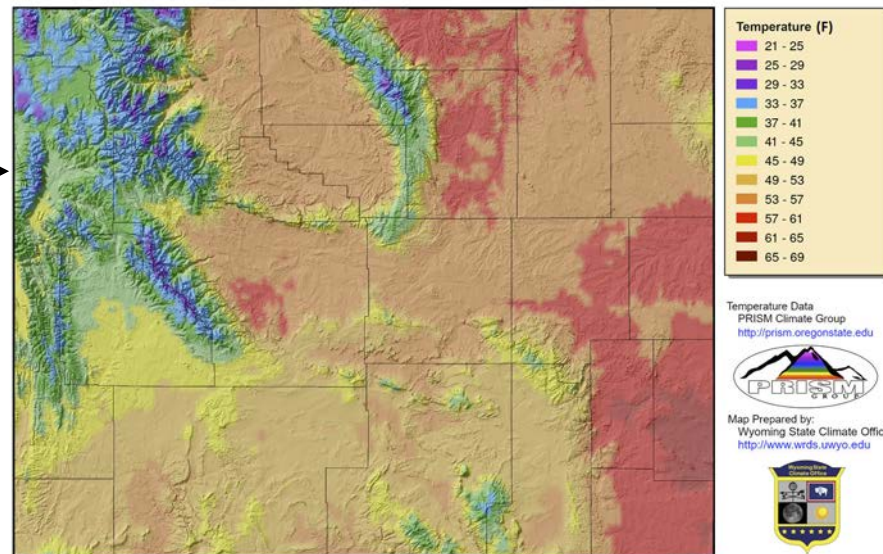
- Upper Green and higher elevation highs about 50F or less

14-Day Average Maximum Temperature (Departure from 1991-2020 Average) for 04 Nov 2021 to 17 Nov 2021



Provisional data, subject to revision

14-Day Average Maximum Temperature for 04 Nov 2021 to 17 Nov 2021



Provisional data, subject to revision

Daily Temperature data from PRISM Climate Group, Copyright ©2021, PRISM Climate Group, Oregon State University, <http://prism.oregonstate.edu>  
Map Created 18 Nov 2021 <http://www.wrds.uwyo.edu>  
Temperature averages created from PRISM daily temperature grids

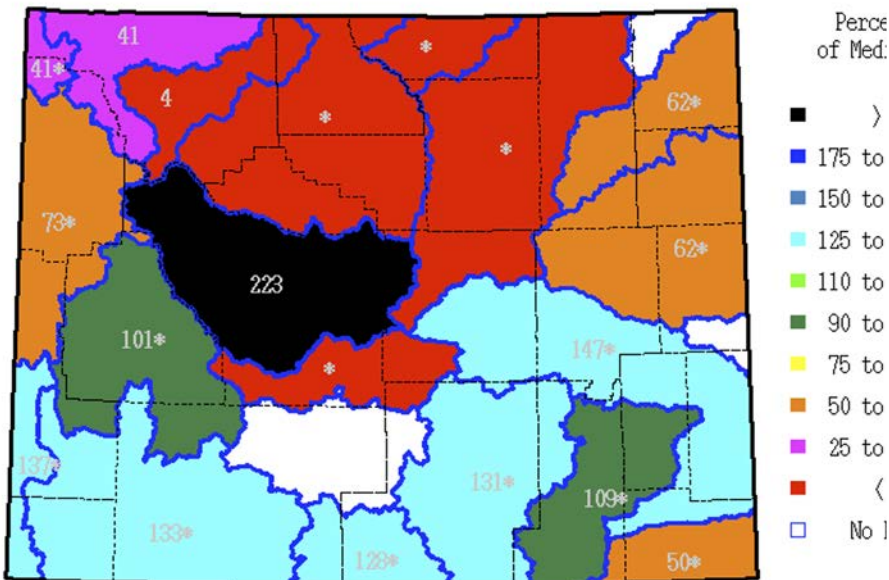
# 14- Day *Departure from Normal* Average **Maximum** Temperature

- Western quarter of Wyoming up to 3F above average (and Weston County)
- 3F to 6F above average for remainder

# Basin Snow Water Equivalent (SWE) Percent of Median

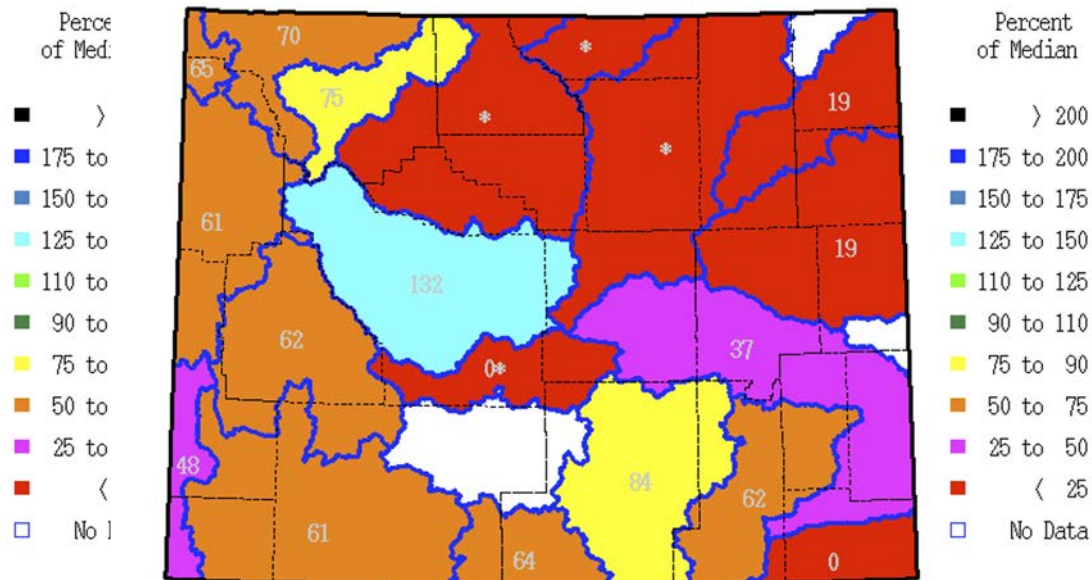
## 2 Weeks Ago (04 Nov 2021)

SWE % of Median as of Thursday, 04 November 2021



## Today (18 Nov 2021)

SWE % of Median as of Thursday, 18 November 2021



Produced by the Wyoming Water Resources Data System: <http://www.wrds.uwyo.edu>  
\* Data may not provide a valid measure of conditions

Produced by the Wyoming Water Resources Data System: <http://www.wrds.uwyo.edu>

Still early in season but snowpack numbers are starting to settle in

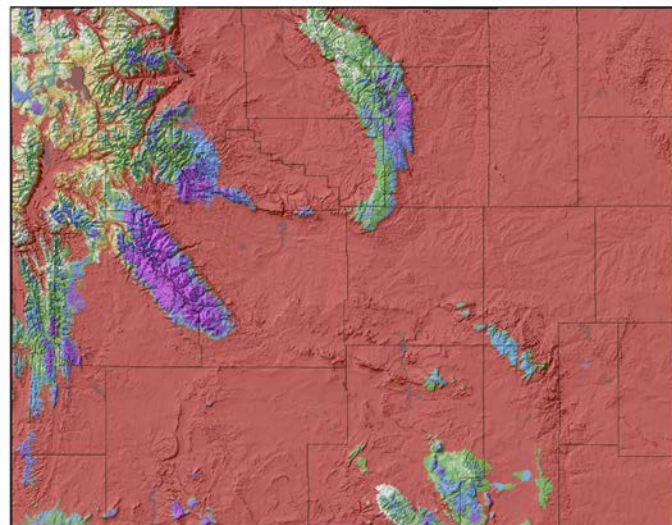


# Modeled Snow Water Equivalent (SWE)

## 2-Week Comparison

04 Nov 2021

Snow Water Equivalent Percentile for 04 Nov 2021 (2004-2021 Period)



Snow Water Equivalent  
NOHRSC  
<https://doi.org/10.7265/NSTB14TC>

Map Prepared by:  
Wyoming State Climate Office  
<http://www.wrds.uwyo.edu>

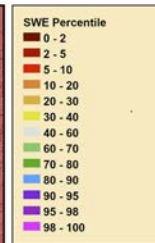
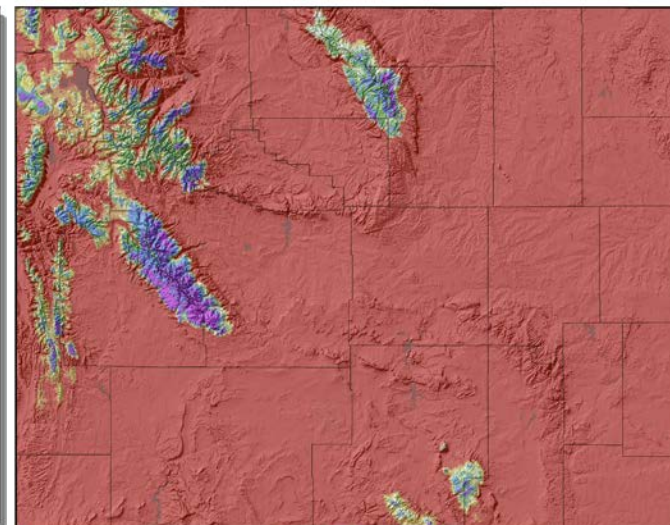


Provisional data, subject to revision

Modeled Snow Water Equivalent from National Operational Hydrologic Remote Sensing Center, 2004, Snow Data Assimilation System (SNODAS) Data Products at NSIDC, Version 1, Boulder, Colorado USA, NSIDC, National Snow and Ice Data Center.  
doi: <https://doi.org/10.7265/NSTB14TC>  
Daily Percentiles and Percents created by Wyoming State Climate Office  
Map Created 04 Nov 2021 - <http://www.wrds.uwyo.edu>

18 Nov 2021

Snow Water Equivalent Percentile for 18 Nov 2021 (2004-2021 Period)



Snow Water Equivalent  
NOHRSC  
<https://doi.org/10.7265/NSTB14TC>

Map Prepared by:  
Wyoming State Climate Office  
<http://www.wrds.uwyo.edu>



Provisional data, subject to revision

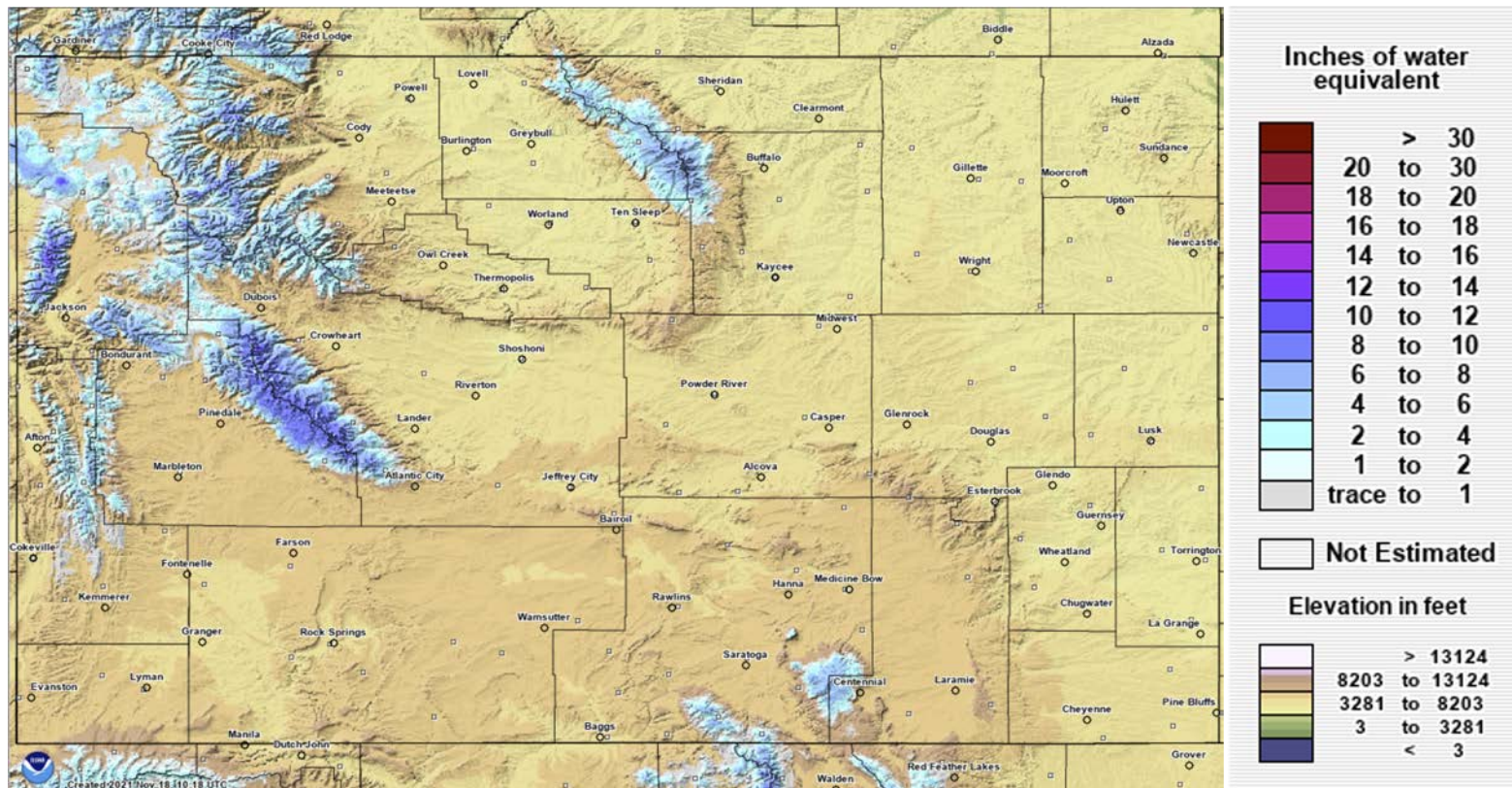
Modeled Snow Water Equivalent from National Operational Hydrologic Remote Sensing Center, 2004, Snow Data Assimilation System (SNODAS) Data Products at NSIDC, Version 1, Boulder, Colorado USA, NSIDC, National Snow and Ice Data Center.  
doi: <https://doi.org/10.7265/NSTB14TC>  
Daily Percentiles and Percents created by Wyoming State Climate Office  
Map Created 18 Nov 2021 - <http://www.wrds.uwyo.edu>

Lost some ground compared to two weeks ago



# Modeled Snow Water Equivalent (SWE)

18 November 2021



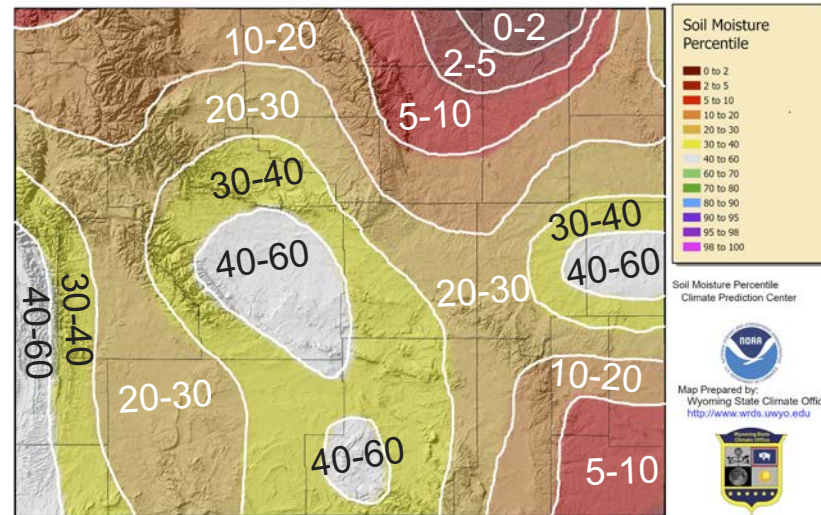
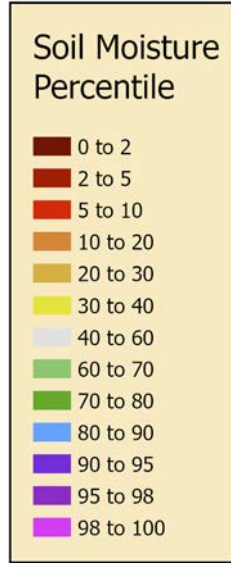
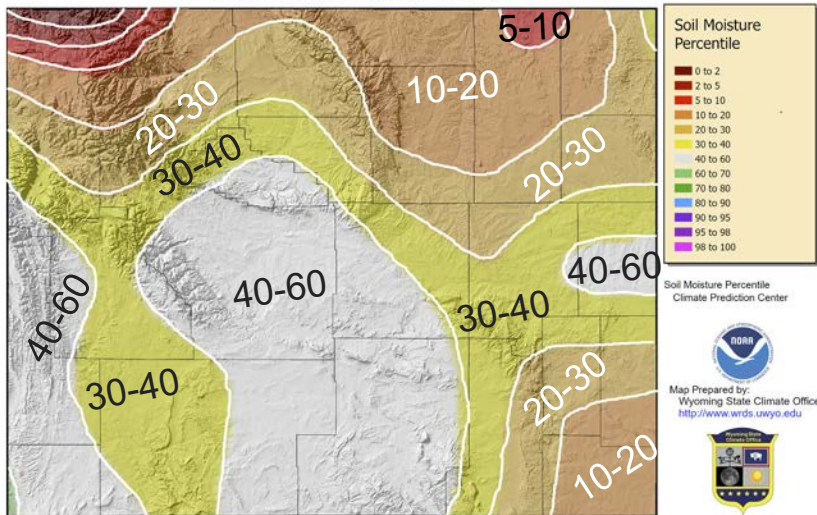
# Soil Moisture Percentile

Two Weeks Ago  
04 Nov 2021

17 Nov 2021

Soil Moisture Percentile for 04 Nov 2021

Soil Moisture Percentile for 17 Nov 2021



Provisional data, subject to revision

Provisional data, subject to revision

Modeled Soil Moisture Percentile [https://www.cpc.ncep.noaa.gov/products/GIS/GIS\\_DATA/USDM\\_Products/soil/soil\\_percentile.php](https://www.cpc.ncep.noaa.gov/products/GIS/GIS_DATA/USDM_Products/soil/soil_percentile.php)  
Map Created 05 Nov 2021 <http://www.wrds.uwyo.edu>

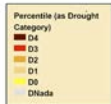
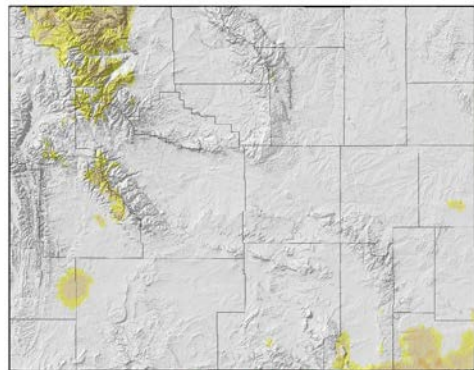
Modeled Soil Moisture Percentile [https://www.cpc.ncep.noaa.gov/products/GIS/GIS\\_DATA/USDM\\_Products/soil/soil\\_percentile.php](https://www.cpc.ncep.noaa.gov/products/GIS/GIS_DATA/USDM_Products/soil/soil_percentile.php)  
Map Created 18 Nov 2021 <http://www.wrds.uwyo.edu>

After some improvements in October, soil moisture once again starting to deteriorate



# Input to the US Drought Monitor

90-Day Precipitation Percentile (as Drought Category) for 20 Aug 2021 to 17 Nov 2021



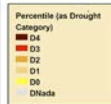
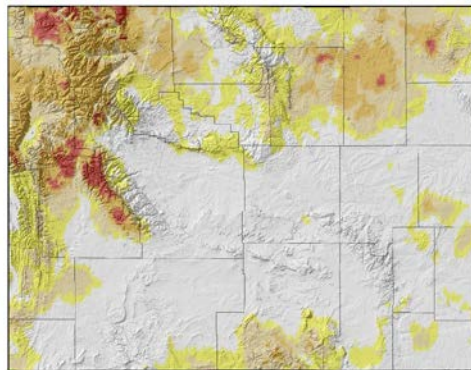
Precipitation Data  
PRISM Climate Group  
<http://prism.oregonstate.edu>

Map Prepared by  
Wyoming State Climate Office  
<http://www.wrds.wyo.gov>

Provisional data, subject to revision

Daily precipitation data from PRISM Climate Group. Copyright ©2021, PRISM Climate Group, Oregon State University.  
<http://prism.oregonstate.edu>  
Map Created 18 Nov 2021 <http://www.wrds.wyo.gov>  
Daily percentiles created from PRISM daily precipitation grids.

365-Day Precipitation Percentile (as Drought Category) for 18 Nov 2020 to 17 Nov 2021



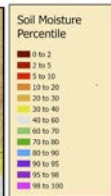
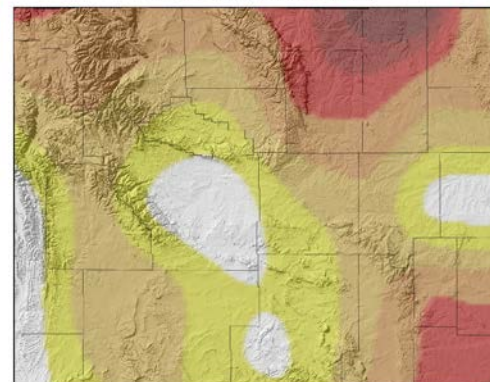
Precipitation Data  
PRISM Climate Group  
<http://prism.oregonstate.edu>

Map Prepared by  
Wyoming State Climate Office  
<http://www.wrds.wyo.gov>

Provisional data, subject to revision

Daily precipitation data from PRISM Climate Group. Copyright ©2021, PRISM Climate Group, Oregon State University.  
<http://prism.oregonstate.edu>  
Map Created 18 Nov 2021 <http://www.wrds.wyo.gov>  
Daily percentiles created from PRISM daily precipitation grids.

Soil Moisture Percentile for 17 Nov 2021



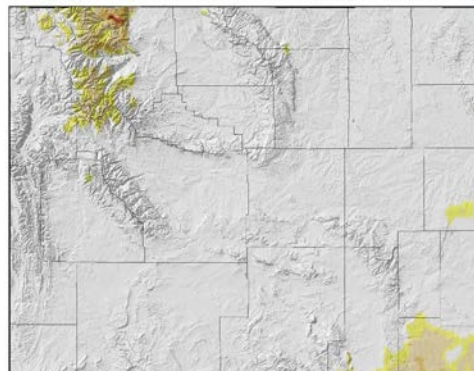
Soil Moisture Percentile  
Climate Prediction Center

Map Prepared by  
Wyoming State Climate Office  
<http://www.wrds.wyo.gov>

Provisional data, subject to revision

Modeled Soil Moisture Percentile [https://www.cpc.ncep.noaa.gov/products/GIS/GIS\\_DATA/USDM\\_Products/soil\\_percentile.php](https://www.cpc.ncep.noaa.gov/products/GIS/GIS_DATA/USDM_Products/soil_percentile.php)  
Map Created 18 Nov 2021 <http://www.wrds.wyo.gov>

90-Day Standardized Precipitation Index as Drought Category (19 Aug 2021 to 16 Nov 2021)



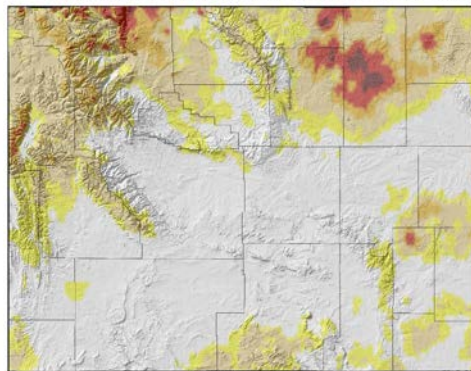
Standardized Precipitation Index  
Montana Climate Office  
<https://drought.climate.umt.edu>

Map Prepared by  
Wyoming State Climate Office  
<http://www.wrds.wyo.gov>

Provisional data, subject to revision

Standardized Precipitation Index Created by Montana Climate Office <https://drought.climate.umt.edu>  
Map Created 18 Nov 2021 <http://www.wrds.wyo.gov>

365-Day Standardized Precipitation Index as Drought Category (17 Nov 2020 to 16 Nov 2021)



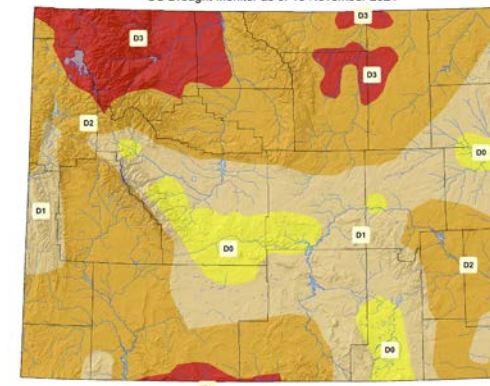
Standardized Precipitation Index  
Montana Climate Office  
<https://drought.climate.umt.edu>

Map Prepared by  
Wyoming State Climate Office  
<http://www.wrds.wyo.gov>

Provisional data, subject to revision

Standardized Precipitation Index Created by Montana Climate Office <https://drought.climate.umt.edu>  
Map Created 18 Nov 2021 <http://www.wrds.wyo.gov>

US Drought Monitor as of 16 November 2021



Map Created by  
National Drought Mitigation Center  
<https://droughtmonitor.umt.edu>

Map Prepared by  
Wyoming State Climate Office  
<http://www.wrds.wyo.gov>

The U.S. Drought Monitor is a weekly map of drought conditions produced jointly by the National Oceanic and Atmospheric Administration, the U.S. Department of Agriculture, and the National Drought Mitigation Center (NDMC) at the University of Nebraska-Lincoln. The U.S. Drought Monitor website is hosted and maintained by the NDMC. <http://droughtmonitor.umt.edu>

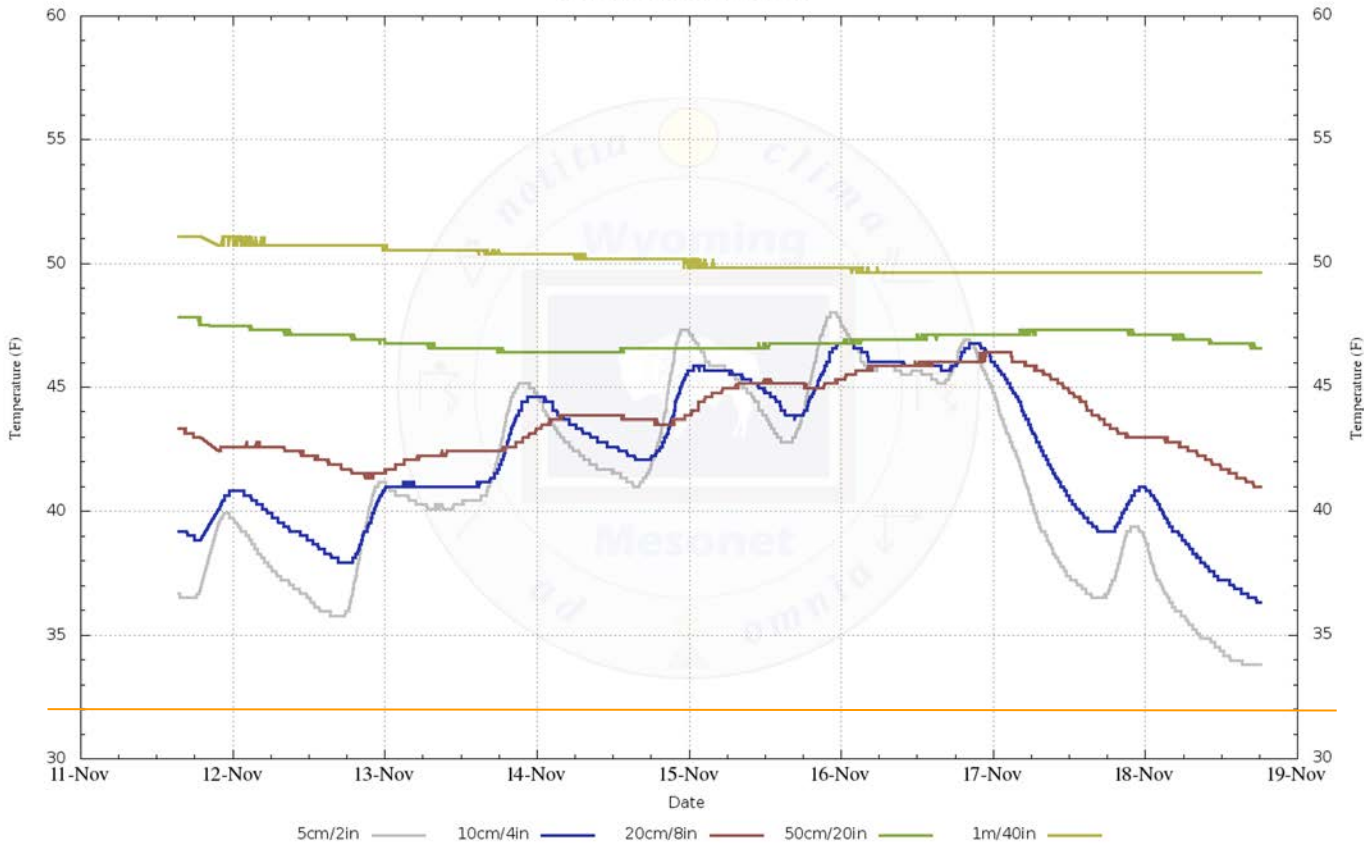
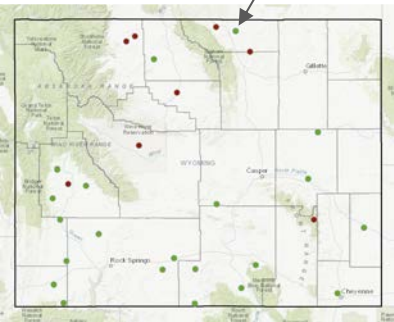




# Soil Temperature at Sheridan

~7 Miles ESE Sheridan

Sheridan - 2021-11-18 18:10:00



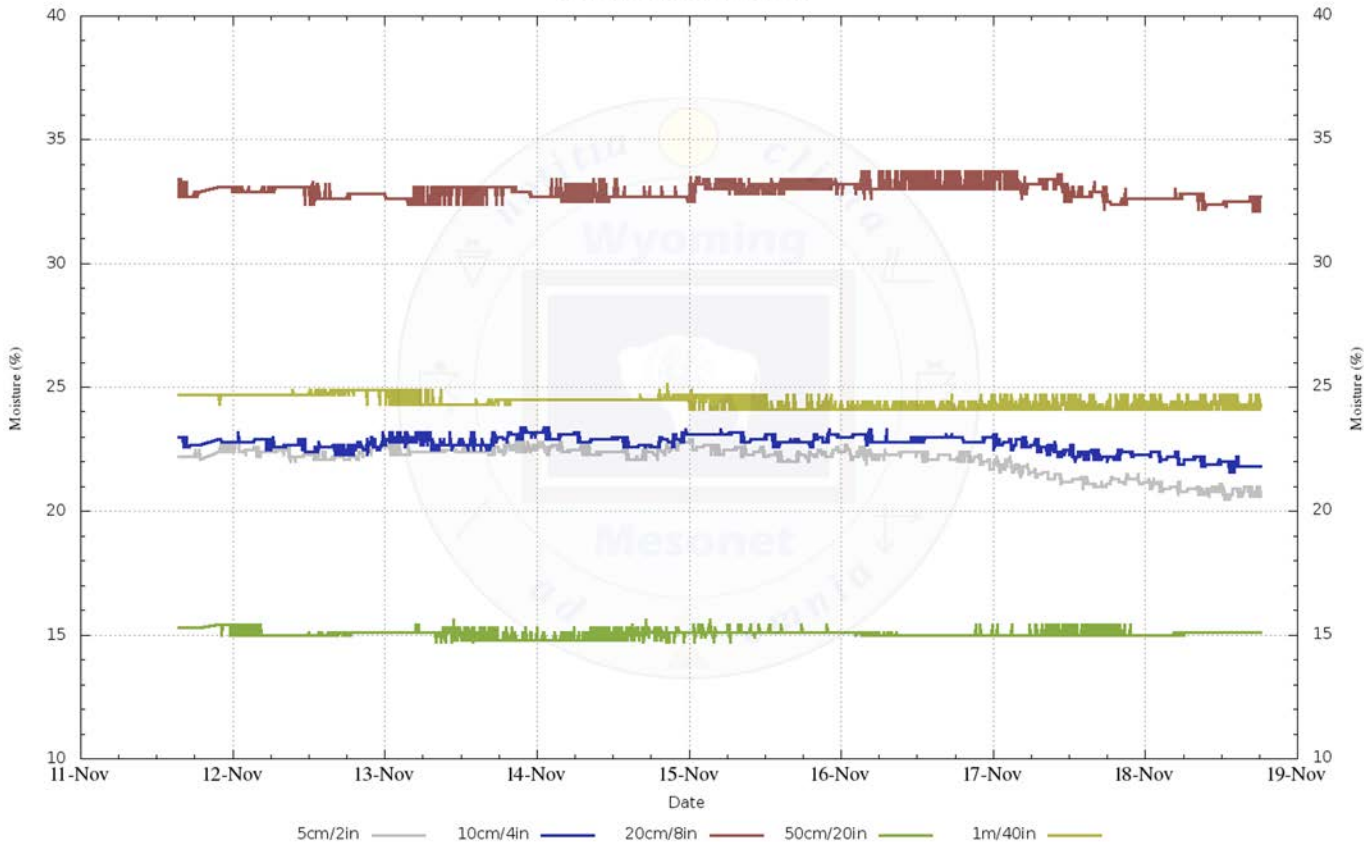
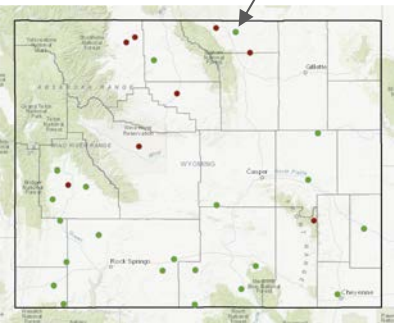
Soil temperature still above freezing at all depths allowing for liquid precipitation or melting snow to “seep in”



# Soil Moisture at Sheridan

~7 Miles ESE Sheridan

Sheridan - 2021-11-18 18:10:00

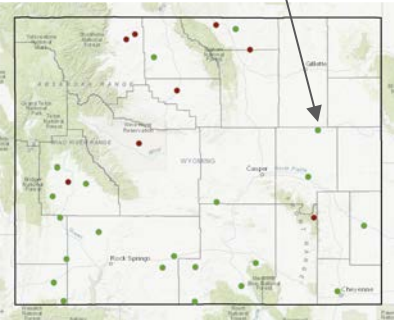


After mid-Oct snowfall melt going into the soil, held relatively stable

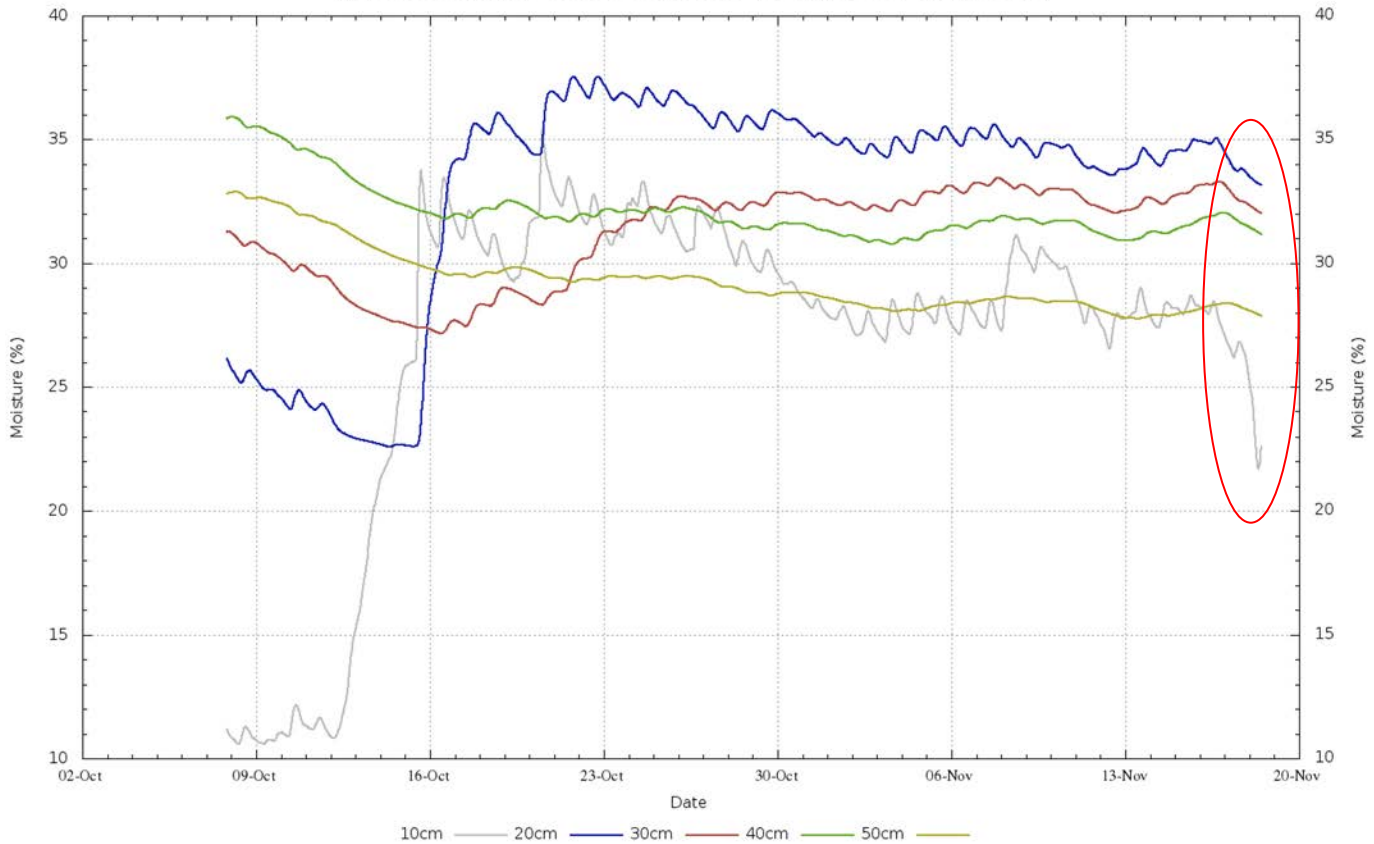


# Soil Moisture at Thunder Basin Grasslands

## Campbell/Converse County Line Area



Thunder Basin Grasslands - 2021-11-18 11:00:00 (Created Thu Nov 18 11:05:01 MST 2021)



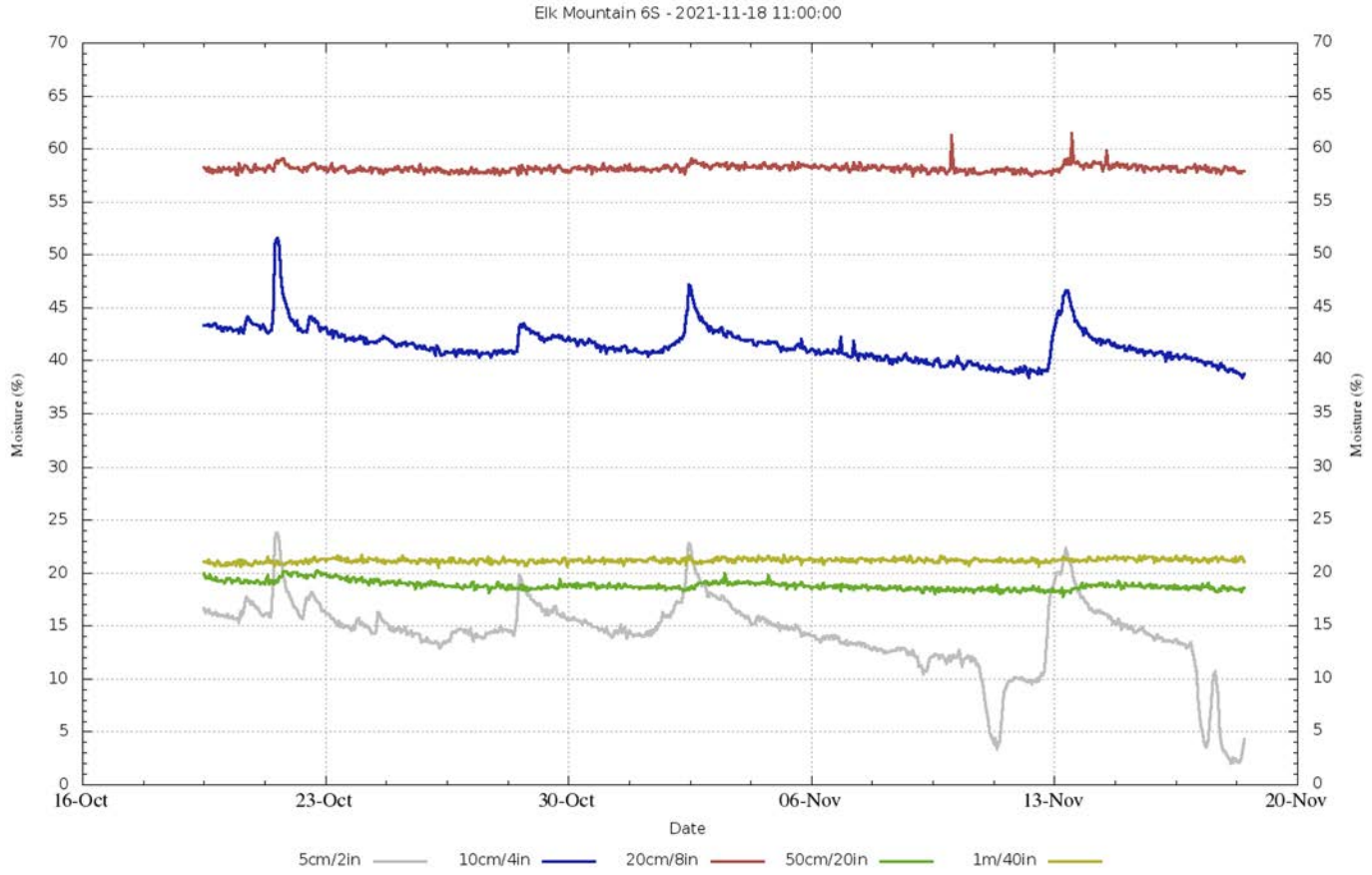
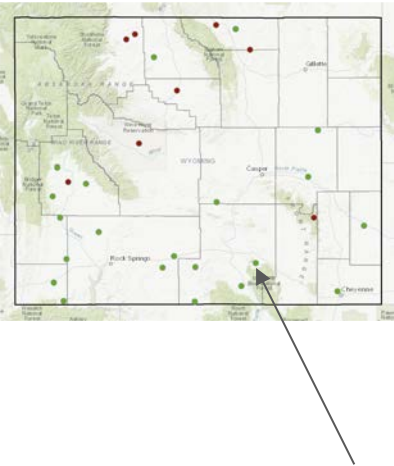
Good increase in soil moisture at 10, 20, and 30 cm from Oct 12 snows. Leveled out and maintained moisture levels after, but...





# Soil Moisture at Elk Mountain

## Elk Mountain

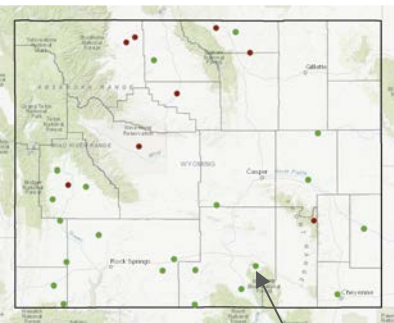


Recent increases in shallower depths (5 to 20 cm) but with quick losses.

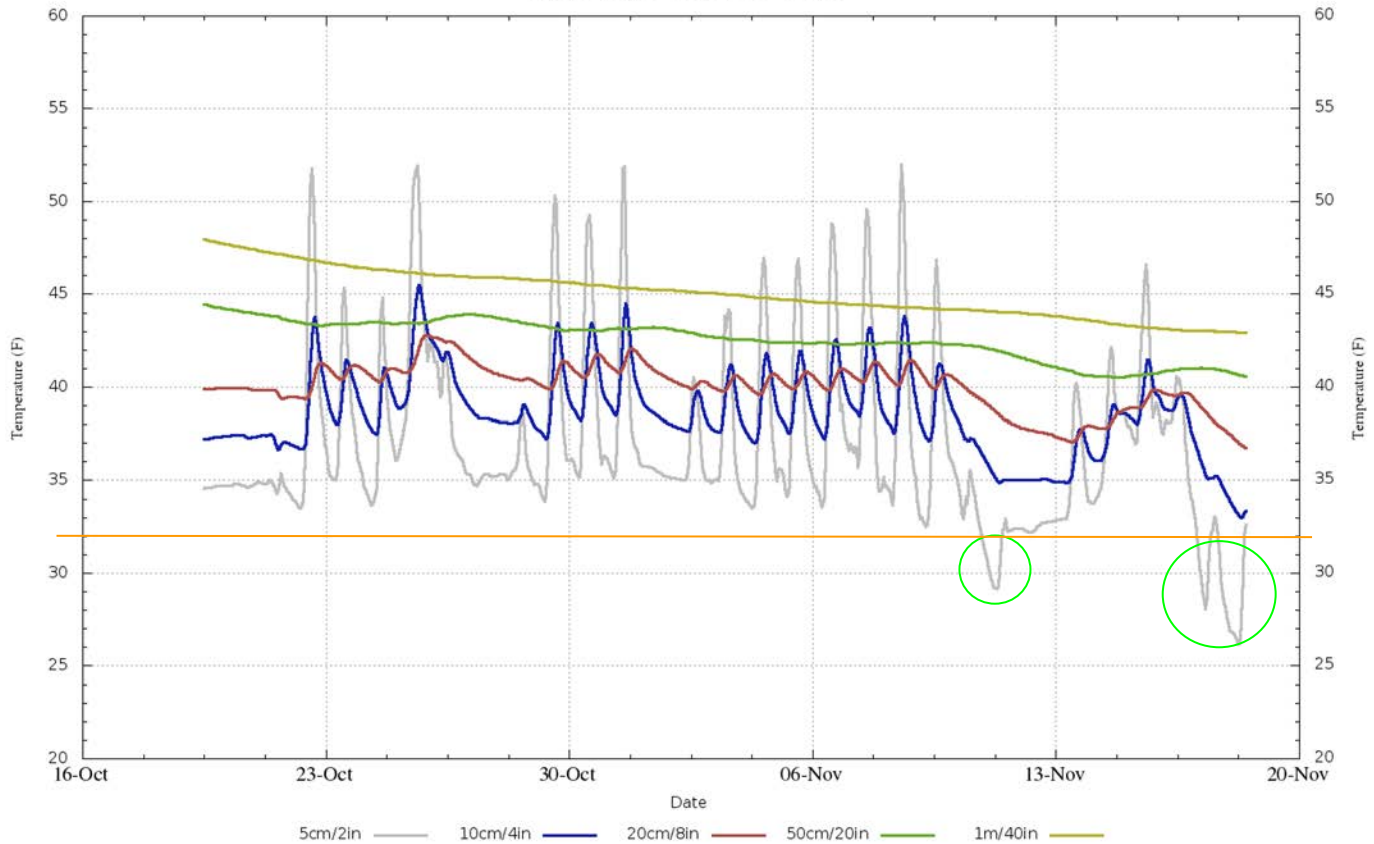


# Soil Temperature at Elk Mountain

Elk Mountain



Elk Mountain 6S - 2021-11-18 11:00:00

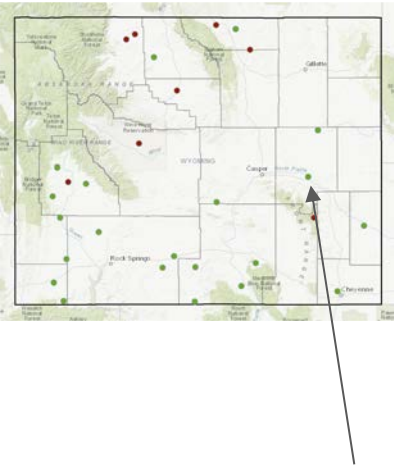


Starting to see soil temperatures dipping below 32F at shallow depths.

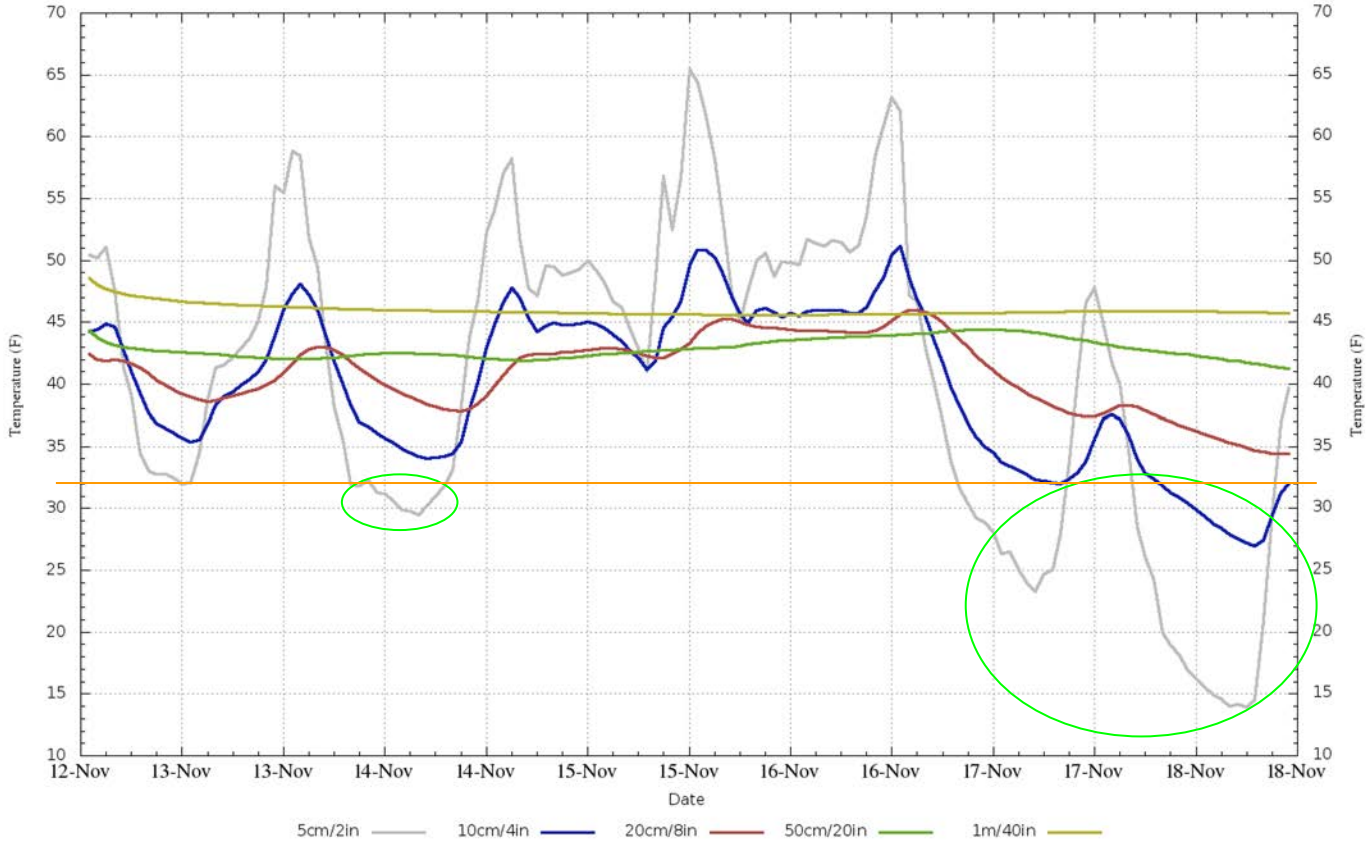


# Soil Temperature at Douglas

## Douglas



Douglas 4NW - 2021-11-18 11:00:00



Soil temperature colder and for longer durations.

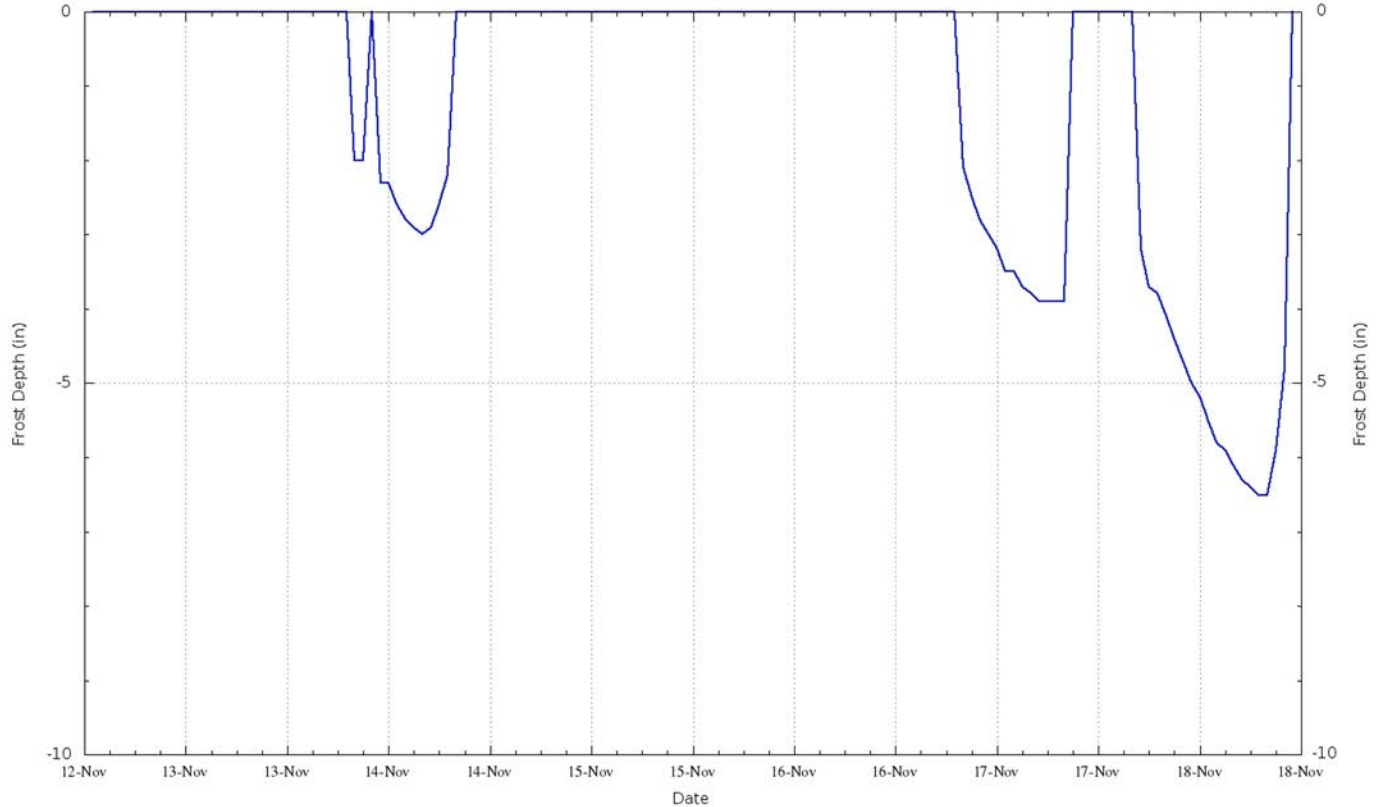
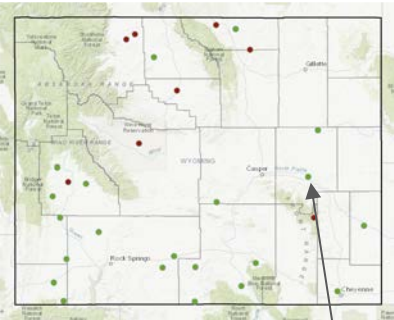




# Frost Depth at Douglas

## Douglas

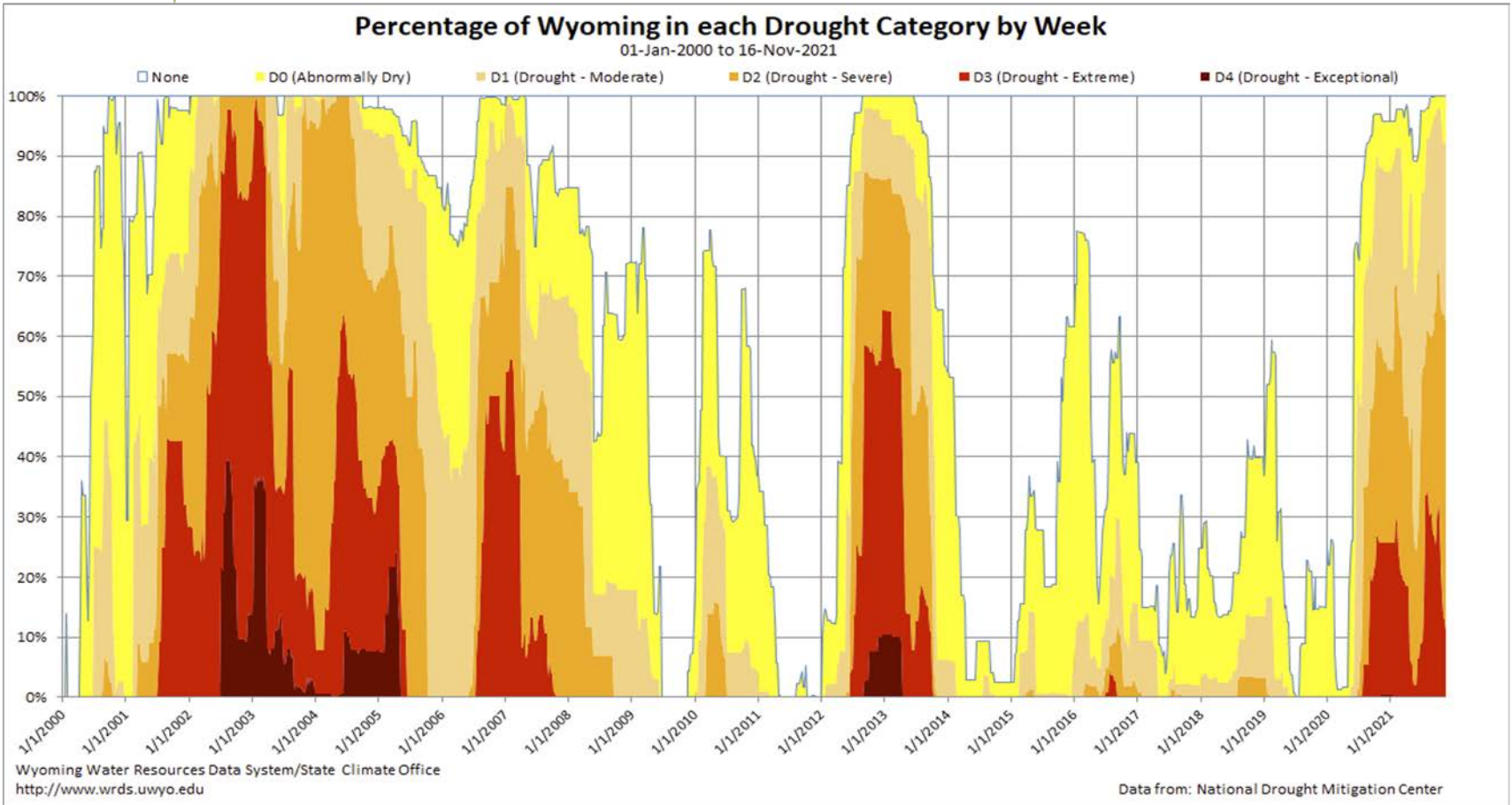
Frost Depth (inches) Douglas 4NW2021-11-18 11:00:00 - Thu Nov 18 11:04:44 MST 2021 (Created)



Frost depth reaching down over a half foot



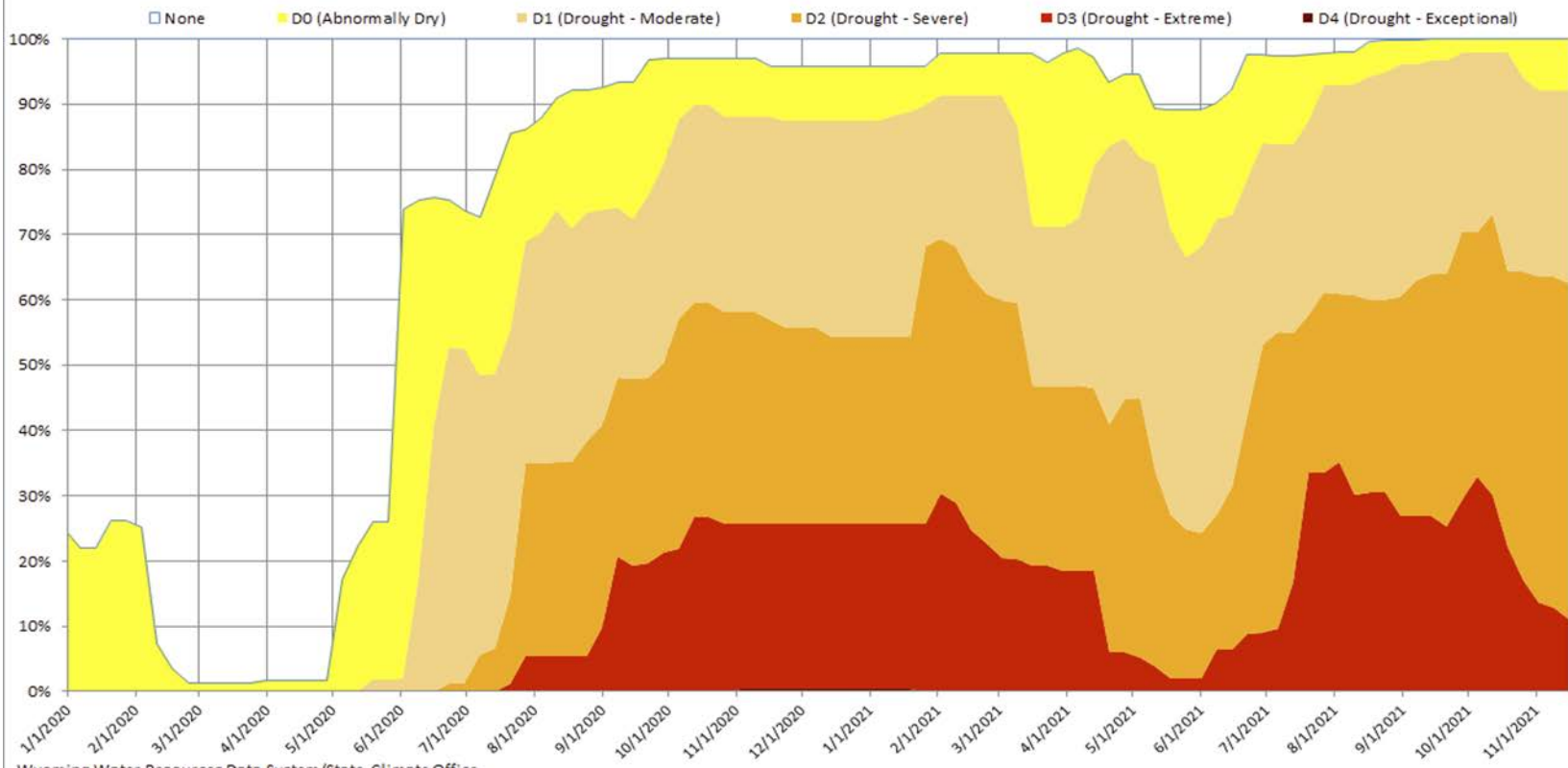
Wyoming Area Affected: 100% D0-D4 ; 92.07% D1-D4





### Percentage of Wyoming in each Drought Category by Week

01-Jan-2020 to 16-Nov-2021

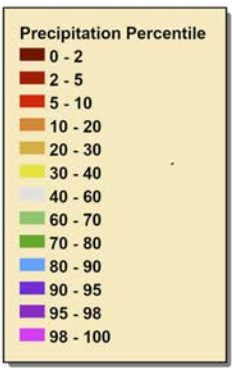
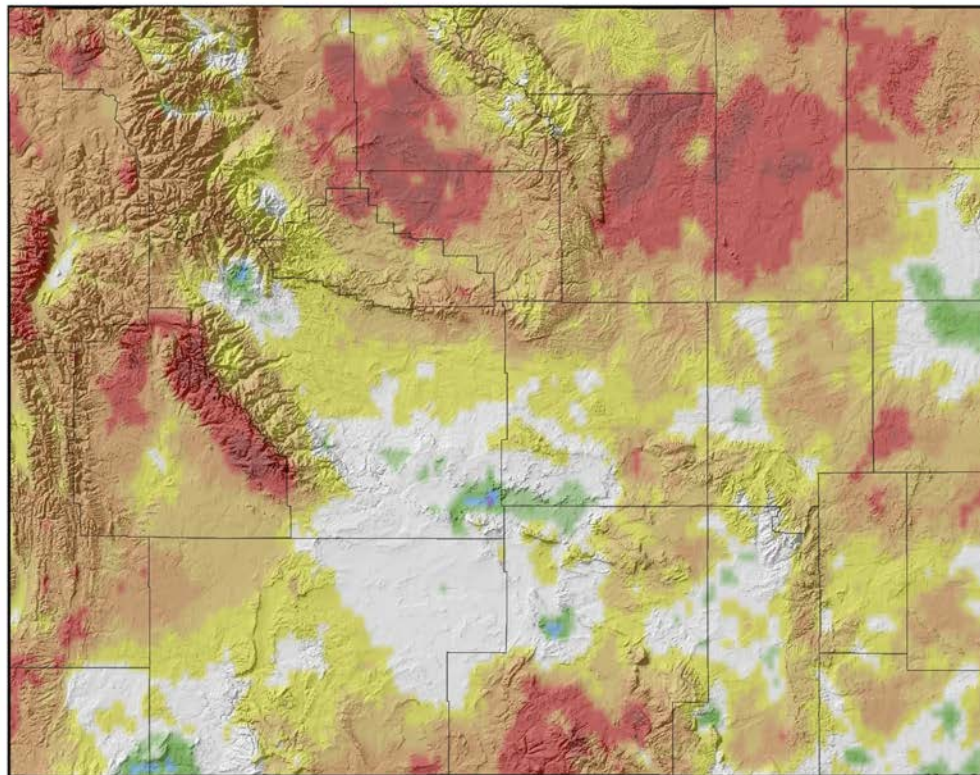


Wyoming Water Resources Data System/State Climate Office  
<http://www.wrds.uwyo.edu>

Data from: National Drought Mitigation Center

# 1-Year Precipitation Percentile (01 Oct 2020 to 30 Sep 2021)

365-Day Precipitation (Percentile) for 01 Oct 2020 to 30 Sep 2021



Precipitation Data  
PRISM Climate Group  
<http://prism.oregonstate.edu>



Map Prepared by:  
Wyoming State Climate Office  
<http://www.wrds.uwyo.edu>



Provisional data, subject to revision

## Above Median:

- Small scattered pockets

## Well Below Median (<=10th Ptile):

- Western Wind River Range
- Bighorn Basin
- Johnson, Campbell, & Crook Counties
- Southern Carbon County
- Far western Wyoming



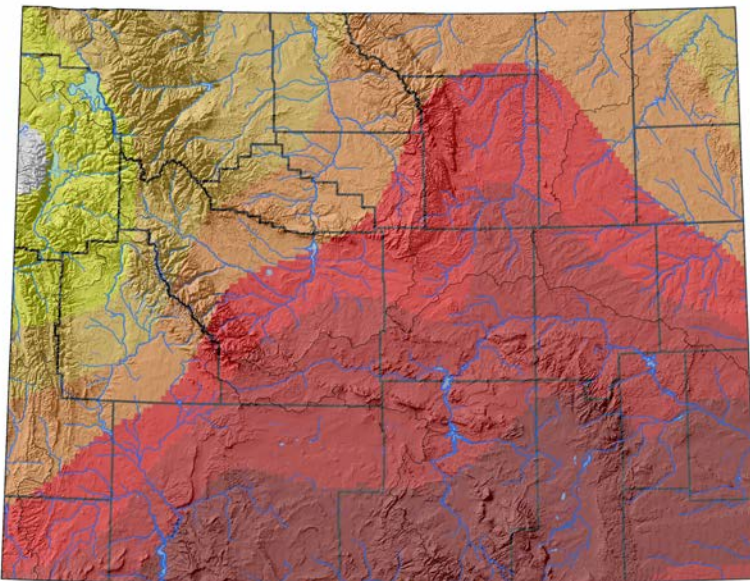
# Soil Moisture Percentile

01 Oct 2020

30 Sep 2021

Soil Moisture Percentile for 01 Oct 2020

Soil Moisture Percentile for 30 Sep 2021



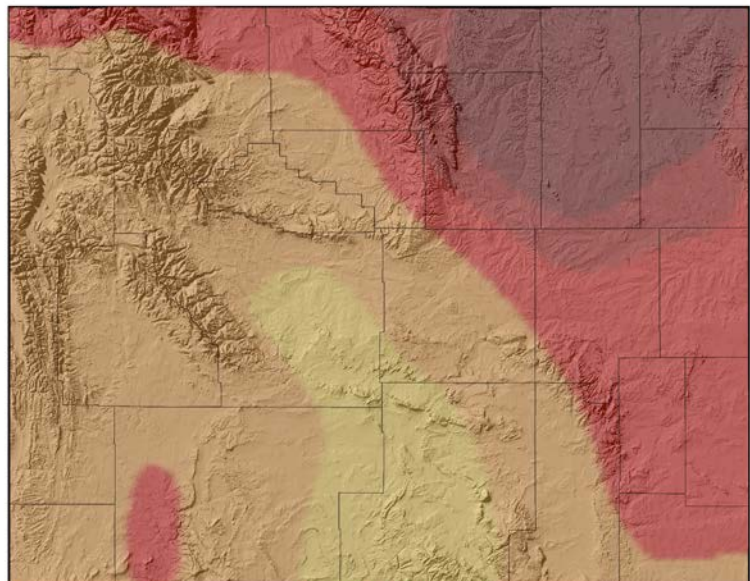
Soil Moisture Percentile  
Climate Prediction Center



Map Prepared by:  
Wyoming State Climate Office  
<http://www.wrds.uwyo.edu>



Provisional data, subject to revision



Soil Moisture Percentile  
Climate Prediction Center



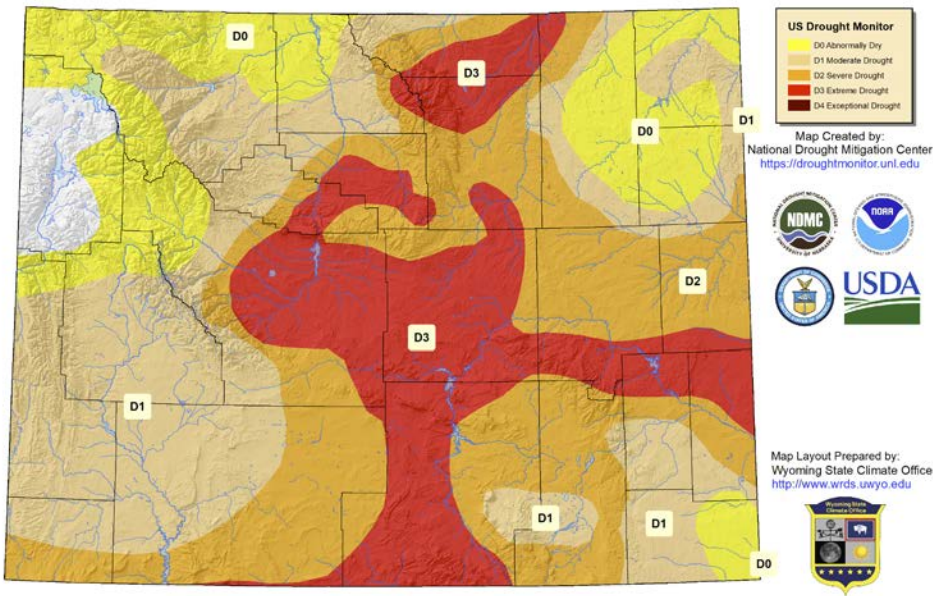
Map Prepared by:  
Wyoming State Climate Office  
<http://www.wrds.uwyo.edu>



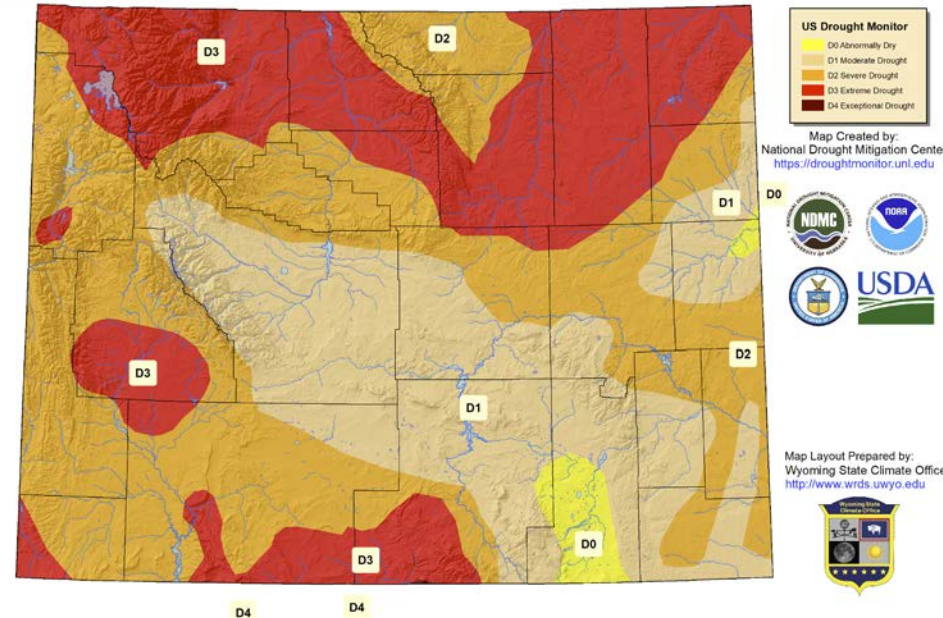
Provisional data, subject to revision

# Drought at Start and End of Water Year 2021

US Drought Monitor as of 29 Sep 2020



US Drought Monitor as of 28 September 2021



The U.S. Drought Monitor, is a weekly map of drought conditions produced jointly by the National Oceanic and Atmospheric Administration, the U.S. Department of Agriculture, and the National Drought Mitigation Center (NDMC) at the University of Nebraska-Lincoln. The U.S. Drought Monitor website is hosted and maintained by the NDMC. <http://droughtmonitor.unl.edu>

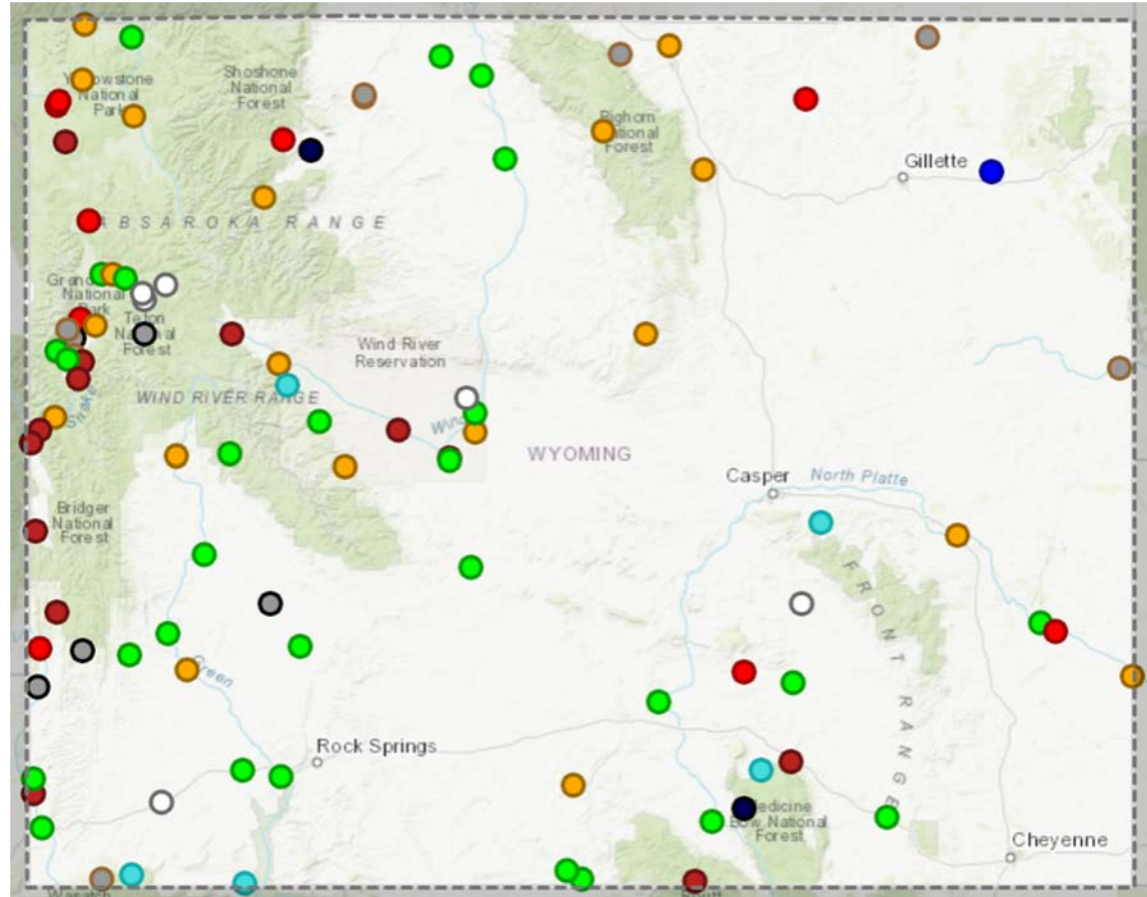
The U.S. Drought Monitor, is a weekly map of drought conditions produced jointly by the National Oceanic and Atmospheric Administration, the U.S. Department of Agriculture, and the National Drought Mitigation Center (NDMC) at the University of Nebraska-Lincoln. The U.S. Drought Monitor website is hosted and maintained by the NDMC. <http://droughtmonitor.unl.edu>



## Streamflow Status

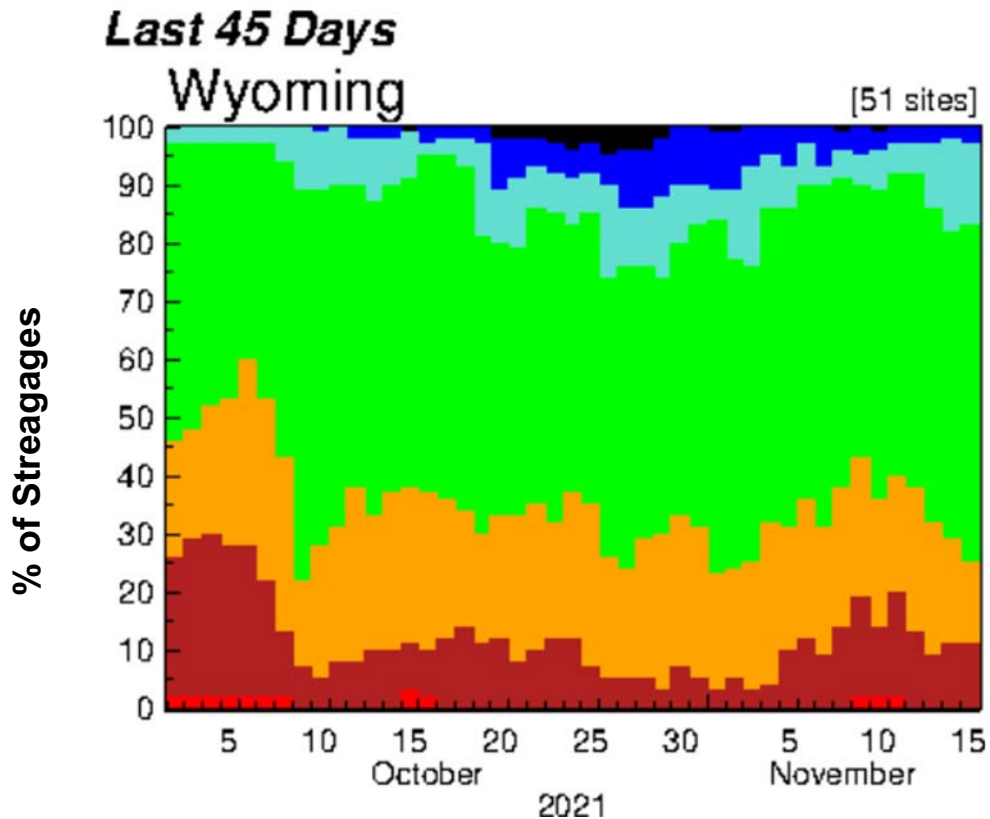
### Streams: Flow status

	All-Time Low for this Day	0 <sup>th</sup> percentile (minimum)
	Much Below Normal	<10 <sup>th</sup> percentile
	Below Normal	10 <sup>th</sup> – 24 <sup>th</sup> percentile
	Normal	25 <sup>th</sup> – 75 <sup>th</sup> percentile
	Above Normal	76 <sup>th</sup> – 90 <sup>th</sup> percentile
	Much Above Normal	>90 <sup>th</sup> percentile
	All-Time High for this Day	100 <sup>th</sup> percentile (maximum)
	Not Flowing	0 cubic feet per second
	Above NWS Flood Stage	See Comments
	Not Ranked	See Comments





# Flow Trends since early October










Only sites with 30 yrs record and no missing values.

Trend since mid/late October  
 Increase in higher flows (Mostly Mountain tributaries)

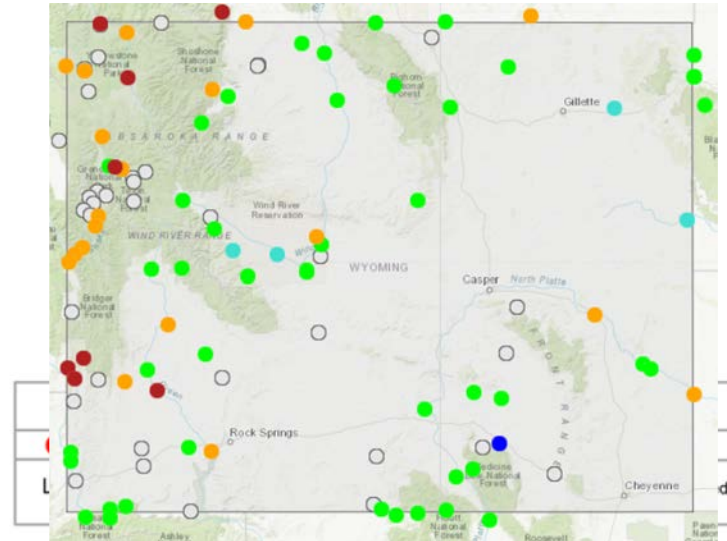
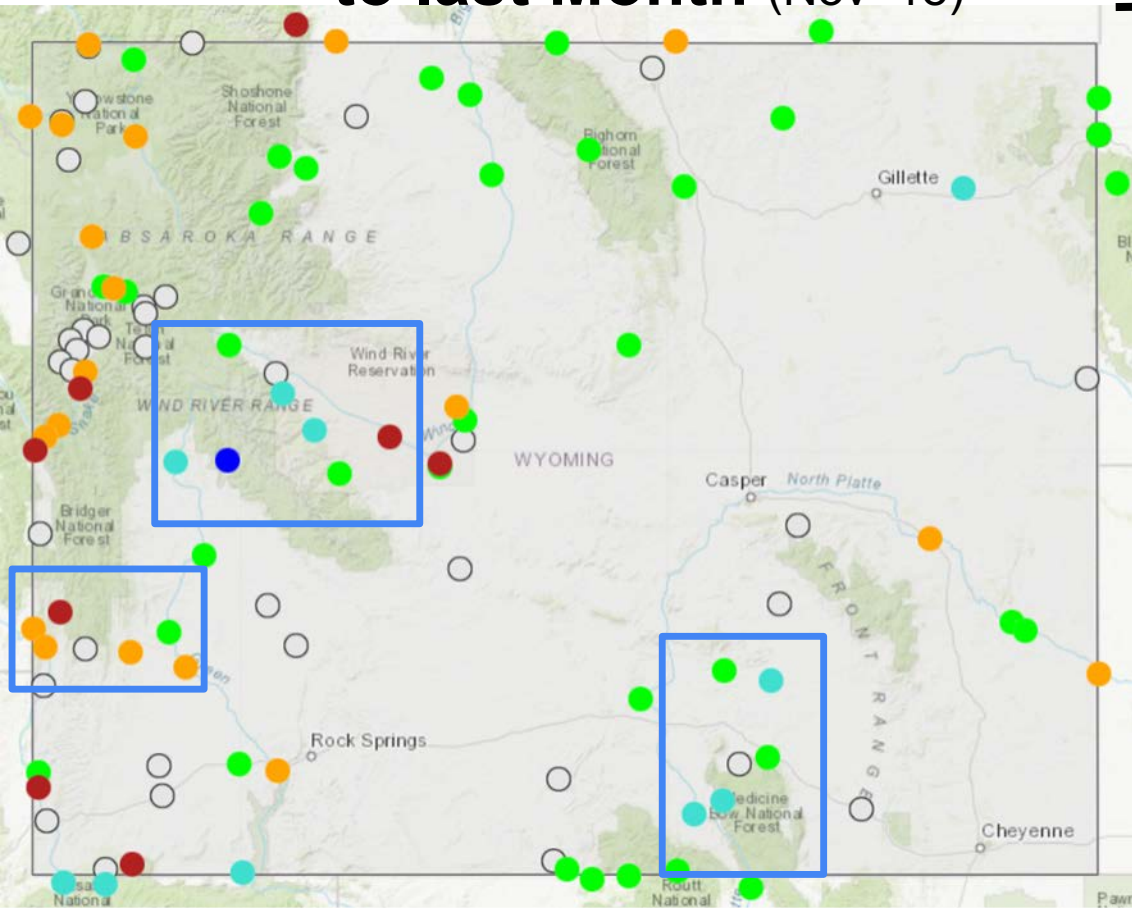
### Record Daily Low Flow

- Firehole near W. Yellowstone

Explanation - Percentile classes							
							
Low	<10 Much below normal	10-24 Below normal	25-75 Normal	76-90 Above normal	>90 Much above normal	High	Not-ranked

# 7-Day Avg Compared to last Month (Nov 18)

Oct 20



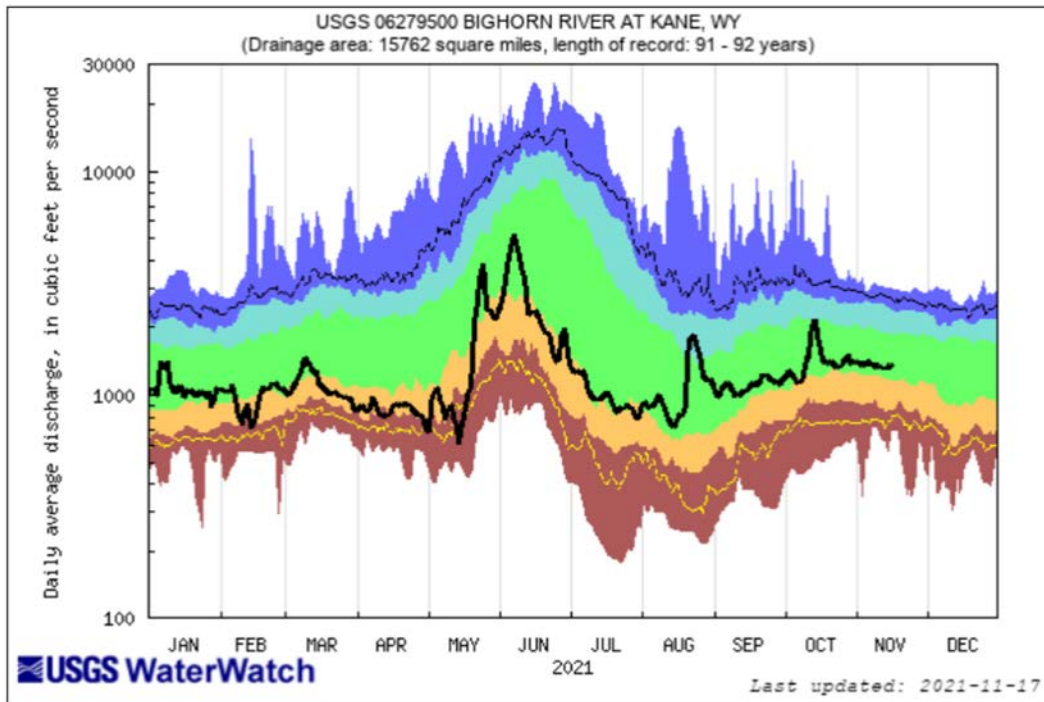
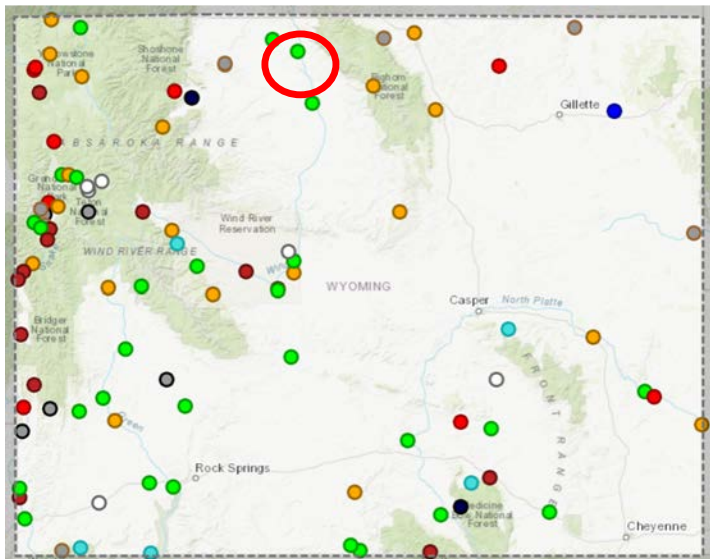
<https://waterwatch.usgs.gov>

- Very similar to last month
- Higher flows- Mtn tributaries
- NW, WC - Still dry

# Select WY Streamflows

## BigHorn River at Kane, WY

Last updated Nov 17, 2021

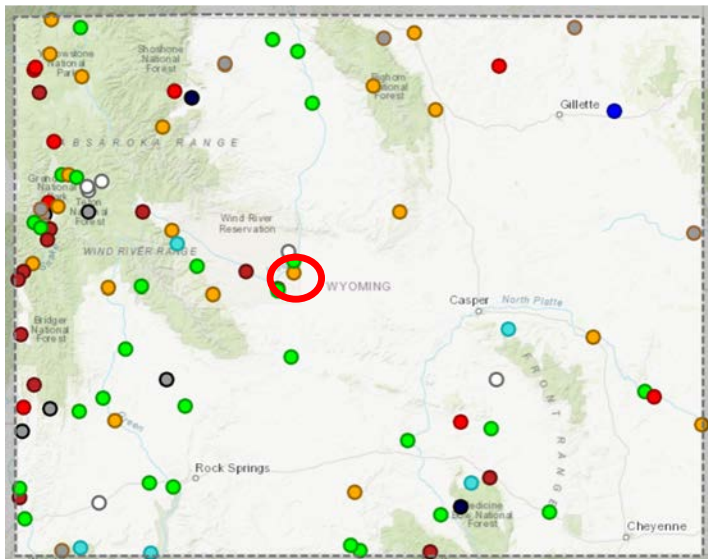


<https://dashboard.waterdata.usgs.gov/>  
<https://waterdata.usgs.gov/>

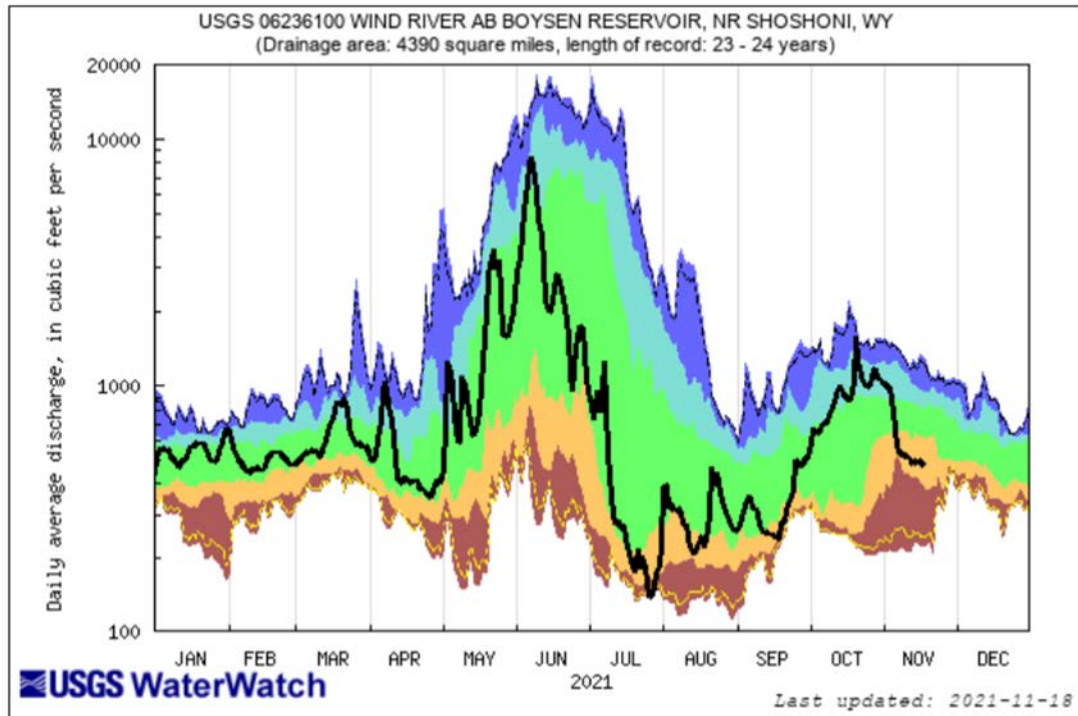
Explanation - Percentile classes							
lowest-10th percentile	5	10-24	25-75	76-90	95	90th percentile - highest	Flow
	Much below Normal	Below normal	Normal	Above normal	Much above normal		



# Select WY Streamflows



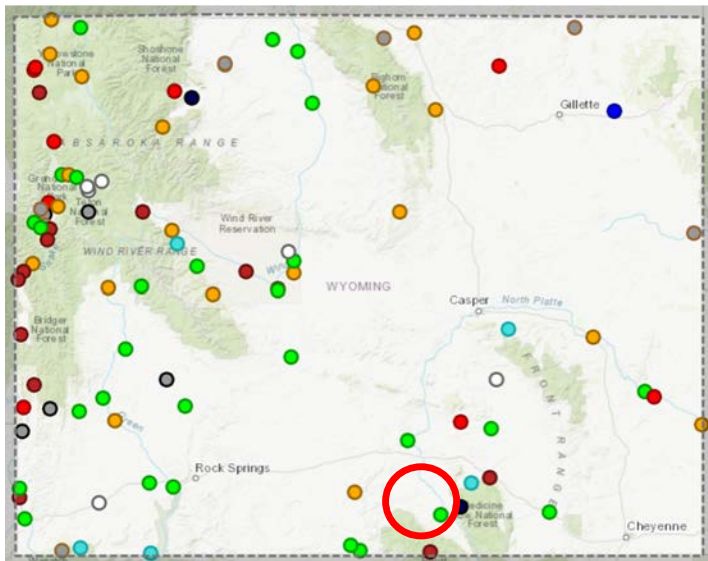
## Wind River above Boysen Reservoir Last updated Nov. 18, 2021



<https://dashboard.waterdata.usgs.gov/>  
<https://waterdata.usgs.gov/>

Explanation - Percentile classes						
lowest-10th percentile	5	10-24	25-75	76-90	95	90th percentile - highest
Much below Normal	Below normal	Normal	Above normal	Much above normal		Flow

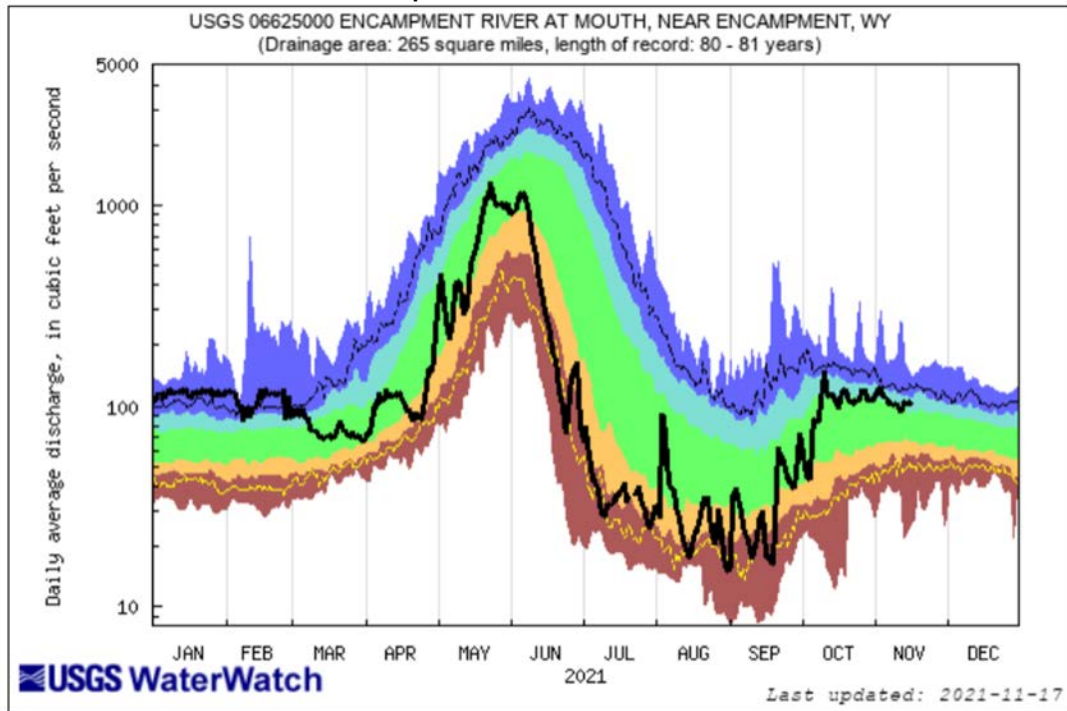
# Select WY Streamflows



<https://dashboard.waterdata.usgs.gov/>  
<https://waterdata.usgs.gov/>

## Encampment River Near Encampment, WY

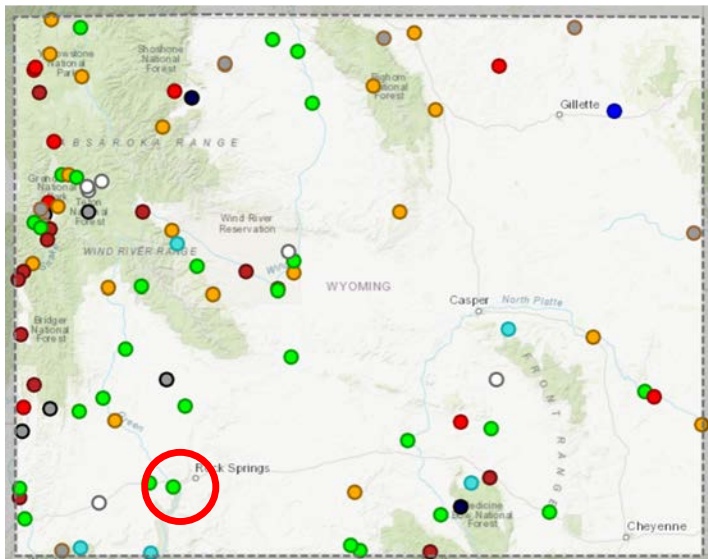
Last updated Nov. 18, 2021



### Explanation - Percentile classes

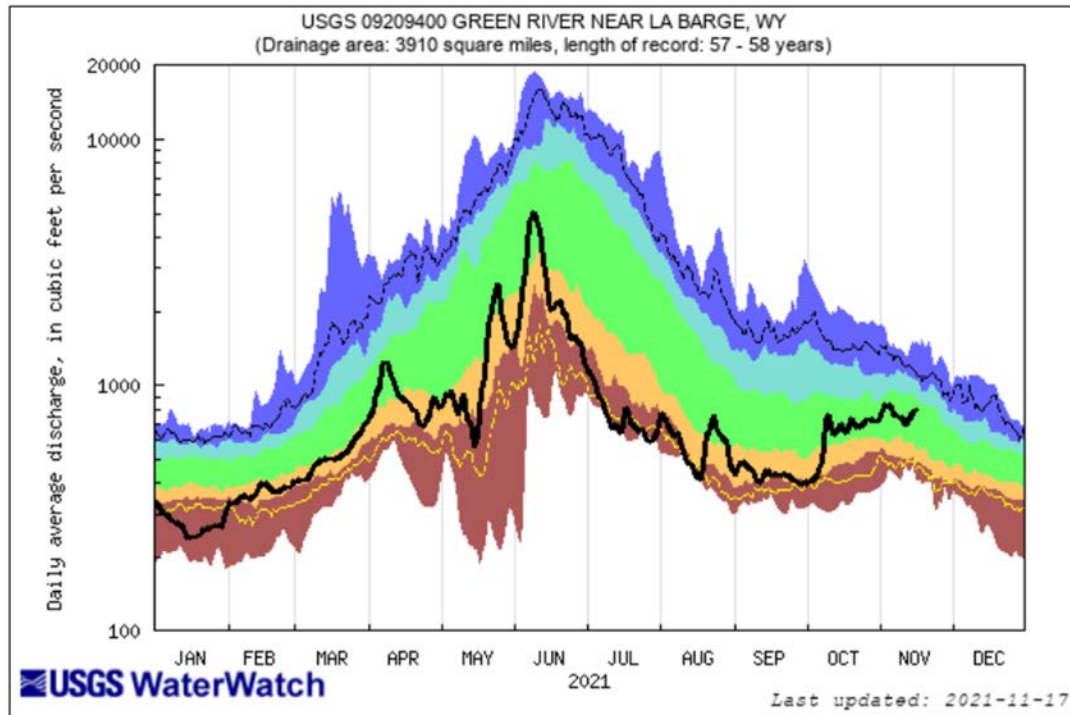
lowest-10th percentile	5	10-24	25-75	76-90	95	90th percentile - highest	Flow
Much below Normal	Below normal	Normal	Above normal	Much above normal			

# Select WY Streamflows



## Green River near La Barge, WY

Last updated Nov. 18, 2021

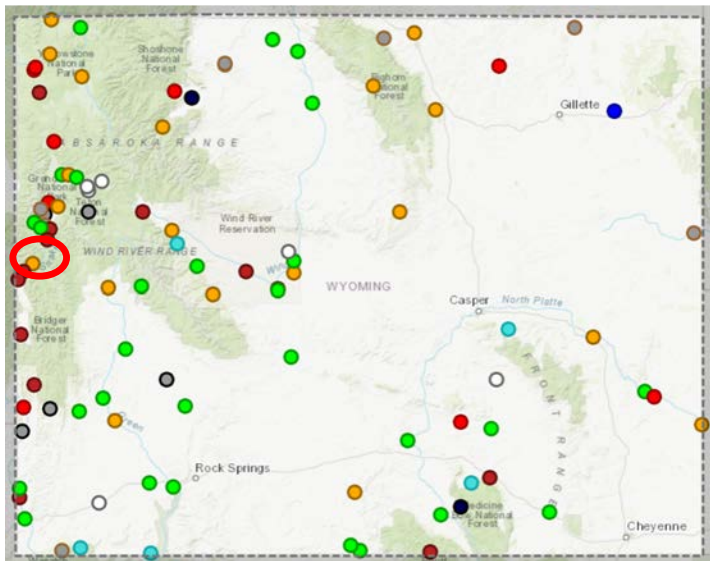


<https://dashboard.waterdata.usgs.gov/>  
<https://waterdata.usgs.gov/>

Explanation - Percentile classes						
lowest-10th percentile	5	10-24	25-75	76-90	95	90th percentile - highest
Much below Normal	Below normal	Normal	Above normal	Much above normal		Flow

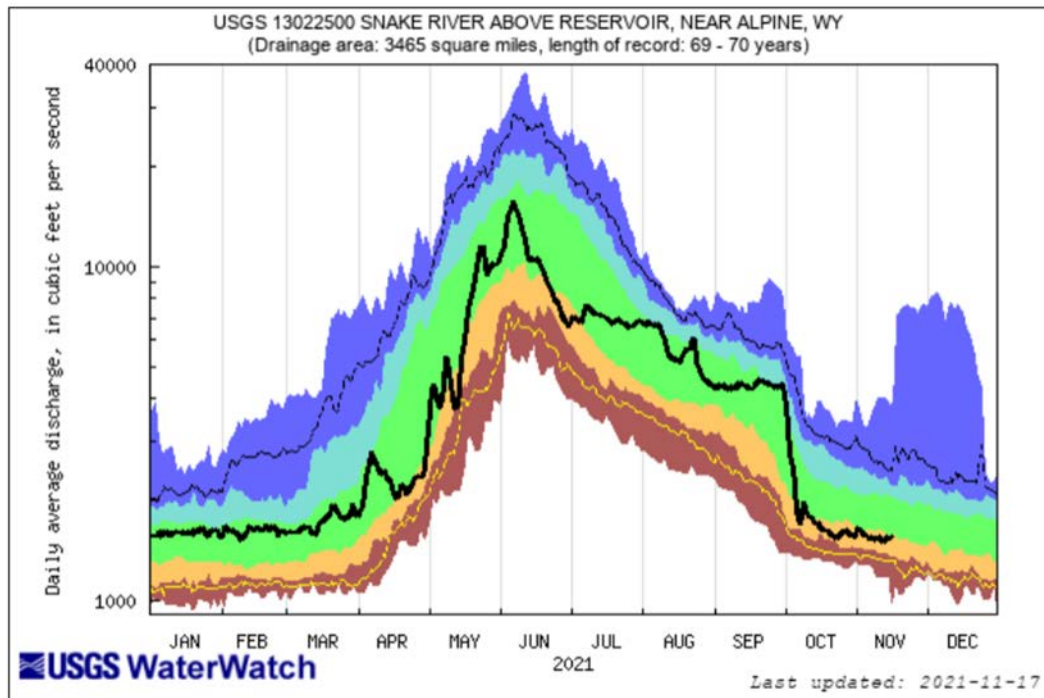


# Select WY Streamflows



## Snake River Above Reservoir Near Alpine, WY

Last updated Nov. 18, 2021

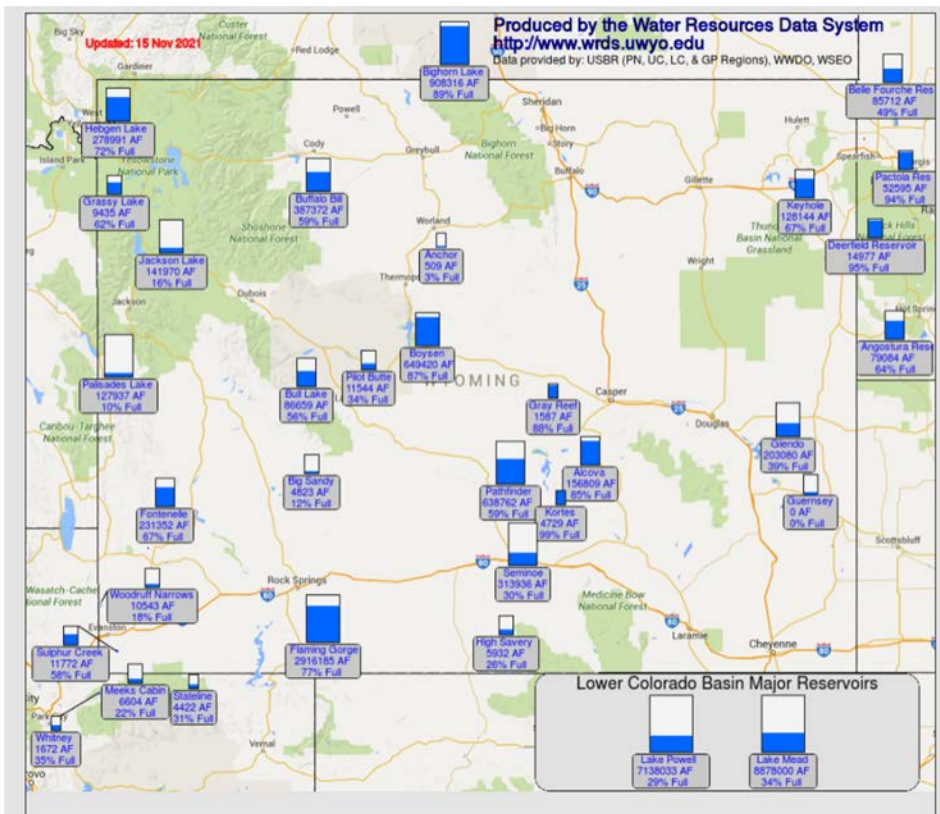


<https://dashboard.waterdata.usgs.gov/>  
<https://waterdata.usgs.gov/>

Explanation - Percentile classes

lowest-10th percentile	5	10-24	25-75	76-90	95	90th percentile - highest	Flow
Much below Normal	Below normal	Normal	Above normal	Much above normal			

# WY Reservoirs (Updated 11/18/21)

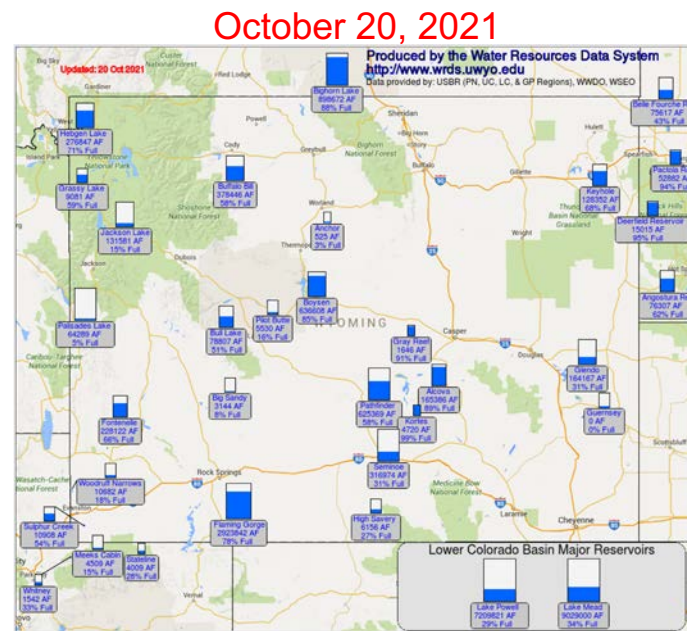


November 15, 2021

[http://www.wrds.uwyo.edu/surface\\_water/teacups.html](http://www.wrds.uwyo.edu/surface_water/teacups.html)

## Compared to October

- No significant changes
- Some minor increases and decreases in storage.





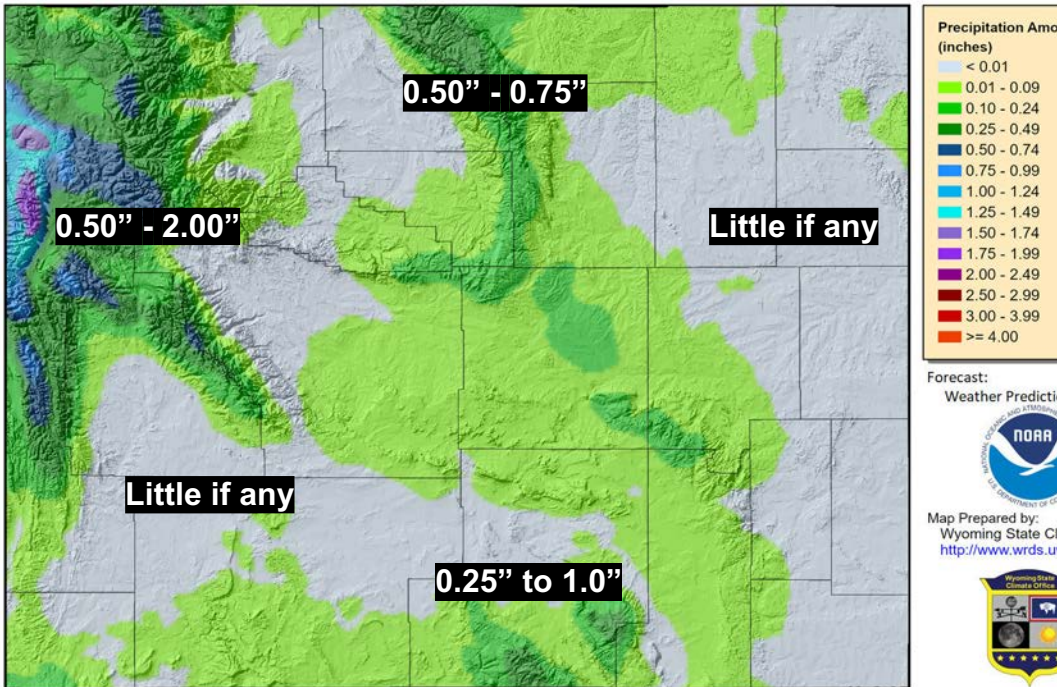
# Forecasts & Outlooks





# 7-Day Quantitative Precipitation Forecast November 18-24

7-Day Quantitative Precipitation Forecast 18 Nov 2021



Provisional data, subject to revision

The Quantitative Precipitation Forecast shows the liquid amount of forecasted precipitation over the next 7 days. The Forecast is created by the National Weather Service Weather Prediction Center, Department of Commerce, National Oceanic and Atmospheric Administration, National Weather Service, National Centers for Environmental Prediction, and Weather Prediction Center - <https://www.wpc.ncep.noaa.gov>  
Map Layout Created 18 Nov 2021 <http://www.wrds.uwyo.edu>

Quantitative Precipitation Forecast  
= Liquid Precipitation Forecast

- Minimal precipitation on the lower elevations
- Snow showers Friday - Saturday morning
- Chance of snow Tuesday - Wednesday
- Temperatures remain warm over eastern WY, cool over the west
- Windy tonight - Friday

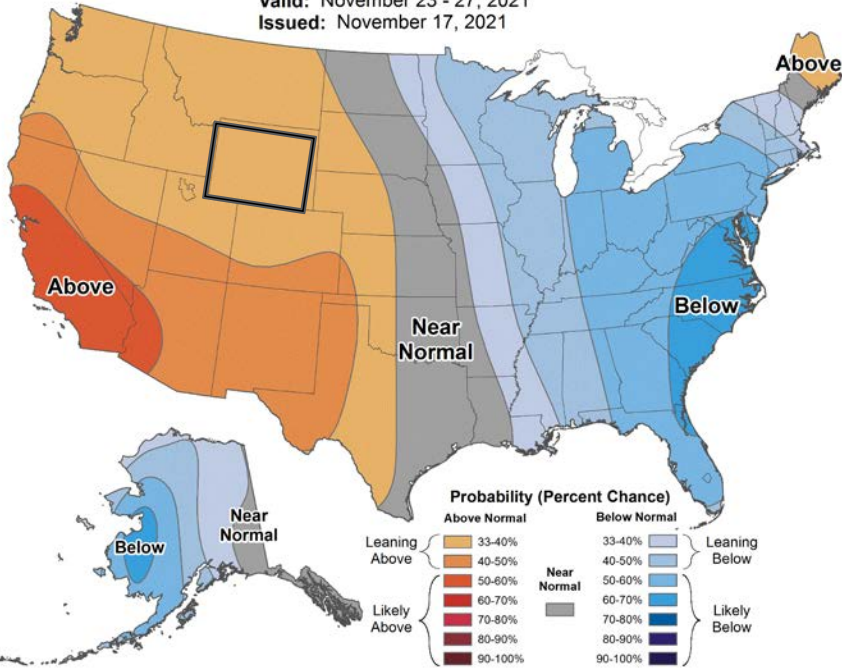
<https://bit.ly/3bZXQeN>



# 6-10 Day Outlooks November 23 - 27

## 6-10 Day Temperature Outlook

Valid: November 23 - 27, 2021  
Issued: November 17, 2021

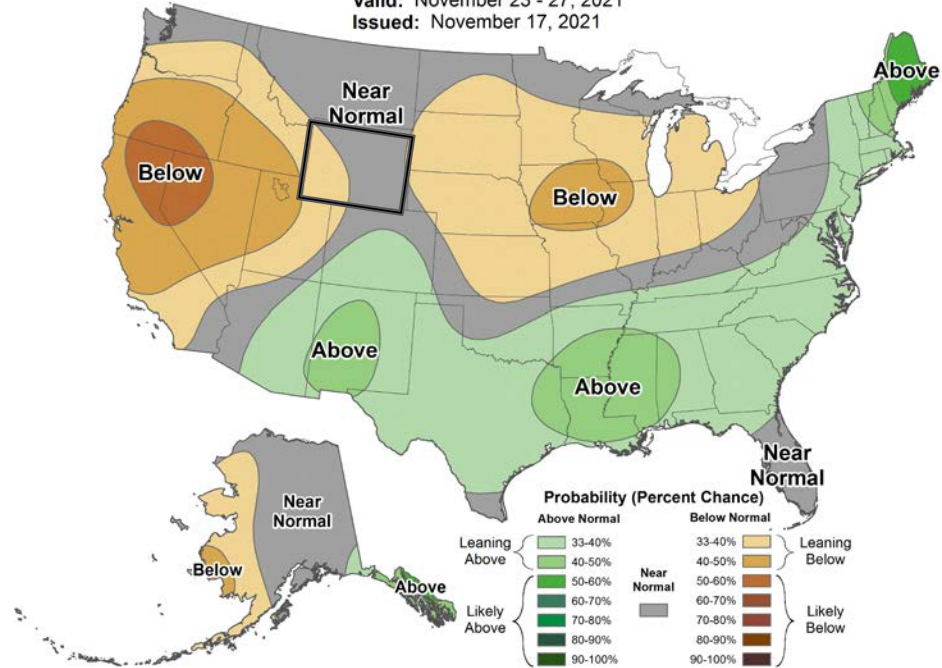


Warmer than normal



## 6-10 Day Precipitation Outlook

Valid: November 23 - 27, 2021  
Issued: November 17, 2021



Below southwest, near normal rest

Probability = Chance

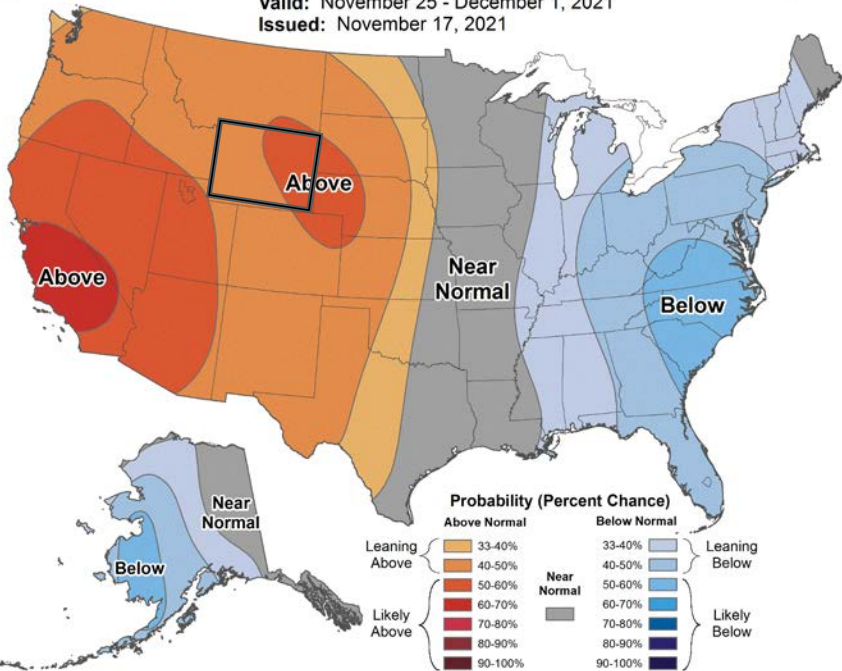
<http://bit.ly/3kq3LxA>



# 8-14 Day Outlooks November 25 - December 1

## 8-14 Day Temperature Outlook

Valid: November 25 - December 1, 2021  
Issued: November 17, 2021

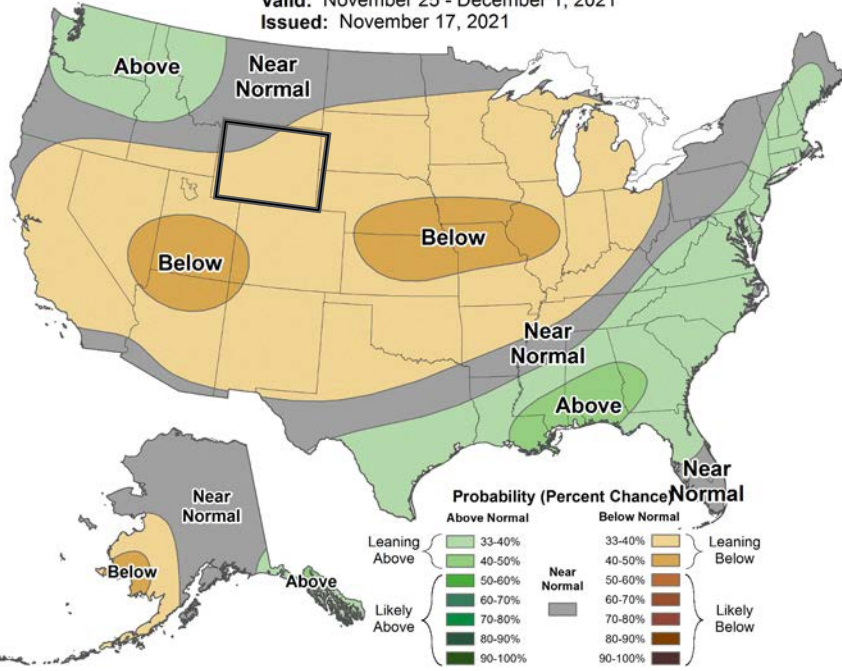


Warmer than normal



## 8-14 Day Precipitation Outlook

Valid: November 25 - December 1, 2021  
Issued: November 17, 2021



Below normal

Probability = Chance

<https://bit.ly/3kq3LxA>

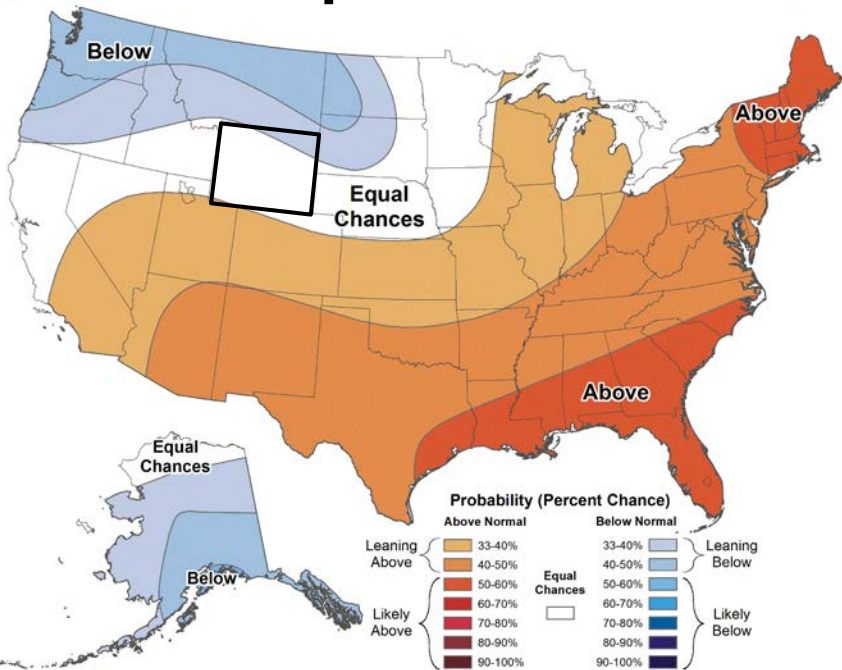




# Winter Outlook

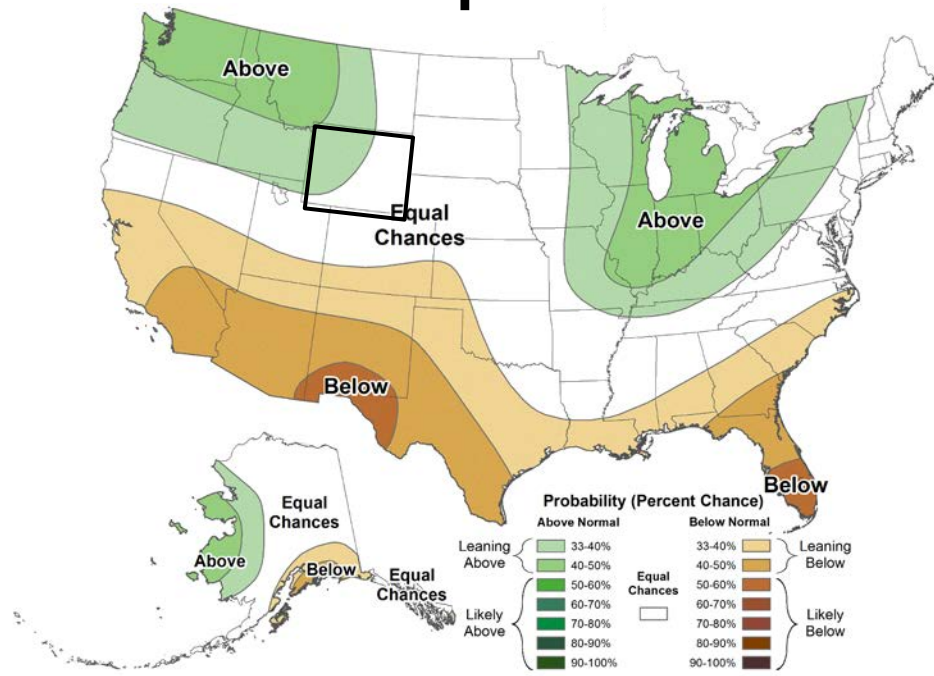
December 2021 - February 2022

## Temperatures



Equal Chances

## Precipitation



Above normal northwest, EC rest



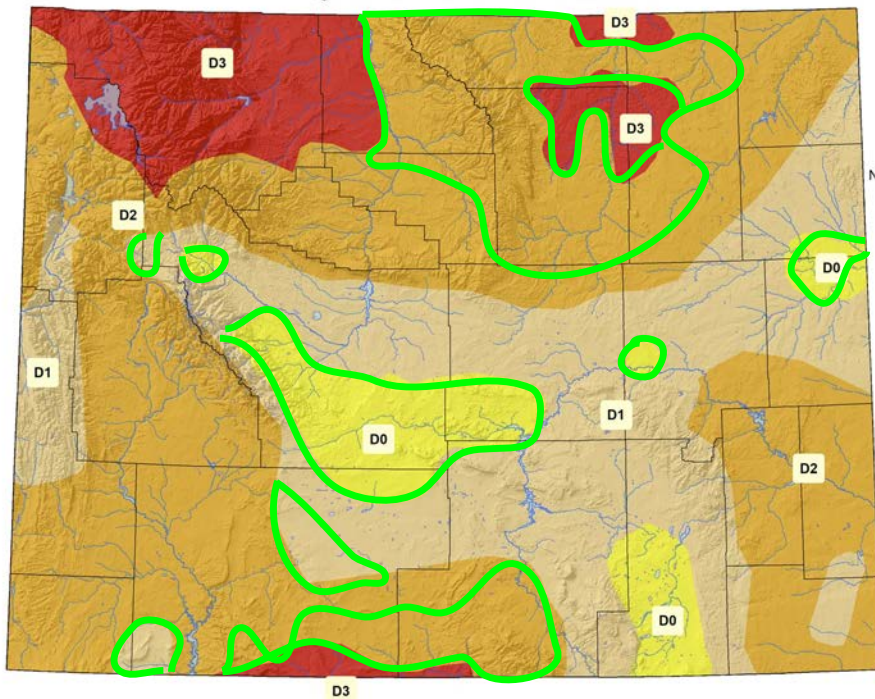
# How to get involved ...

# US Drought Monitor for November 16, 2021

(Released Thursday, November 18, 2021)

Valid 8 a.m. EDT

US Drought Monitor as of 16 November 2021



**US Drought Monitor**

- D0 Abnormally Dry
- D1 Moderate Drought
- D2 Severe Drought
- D3 Extreme Drought
- D4 Exceptional Drought

Map Created by:  
National Drought Mitigation Center  
<https://droughtmonitor.unl.edu>



Map Layout Prepared by:  
Wyoming State Climate Office  
<http://www.wrds.uwyo.edu>



Drought Level	Percentile
None	>30
D0 (Abnormally Dry)	21 to 30
D1 (Moderate Drought)	11 to 20
D2 (Severe Drought)	6 to 10
D3 (Extreme Drought)	3 to 5
D4 (Exceptional Drought)	0 to 2

**Improvements** throughout the state as soil moisture improves, partly because the ground is still thawed and melting snow has been able to infiltrate the soil column.

The U.S. Drought Monitor, is a weekly map of drought conditions produced jointly by the National Oceanic and Atmospheric Administration, the U.S. Department of Agriculture, and the National Drought Mitigation Center (NDMC) at the University of Nebraska-Lincoln. The U.S. Drought Monitor website is hosted and maintained by the NDMC. <http://droughtmonitor.unl.edu>



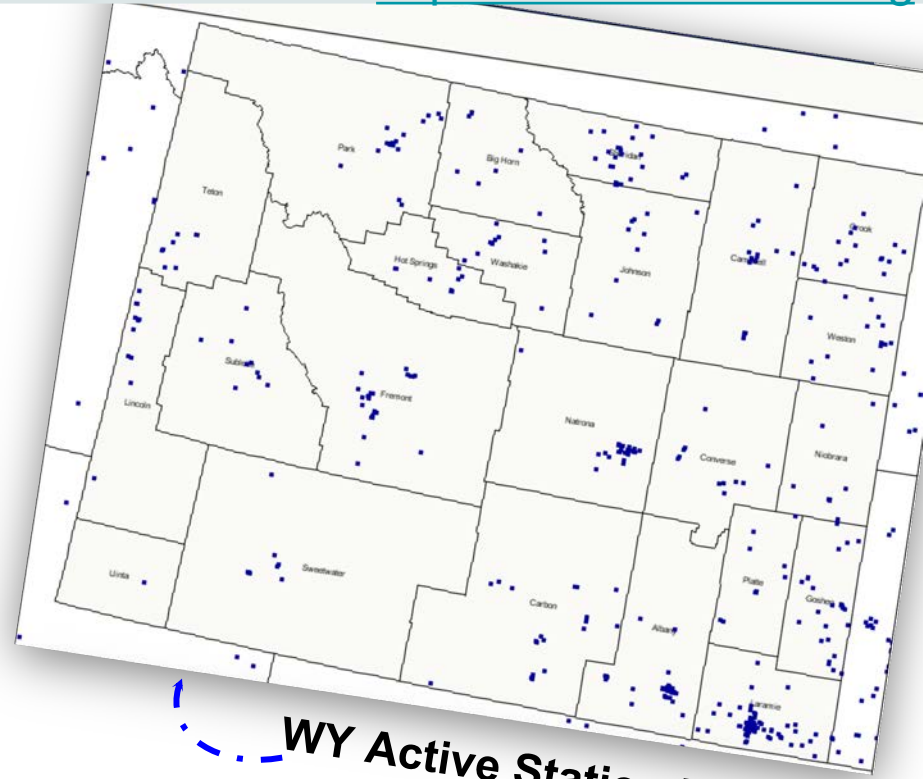




# CoCoRaHS Mapping System

<https://www.cocorahs.org>

**November 18, 2021:**  
**24-hour precip as of ~ 7 am**



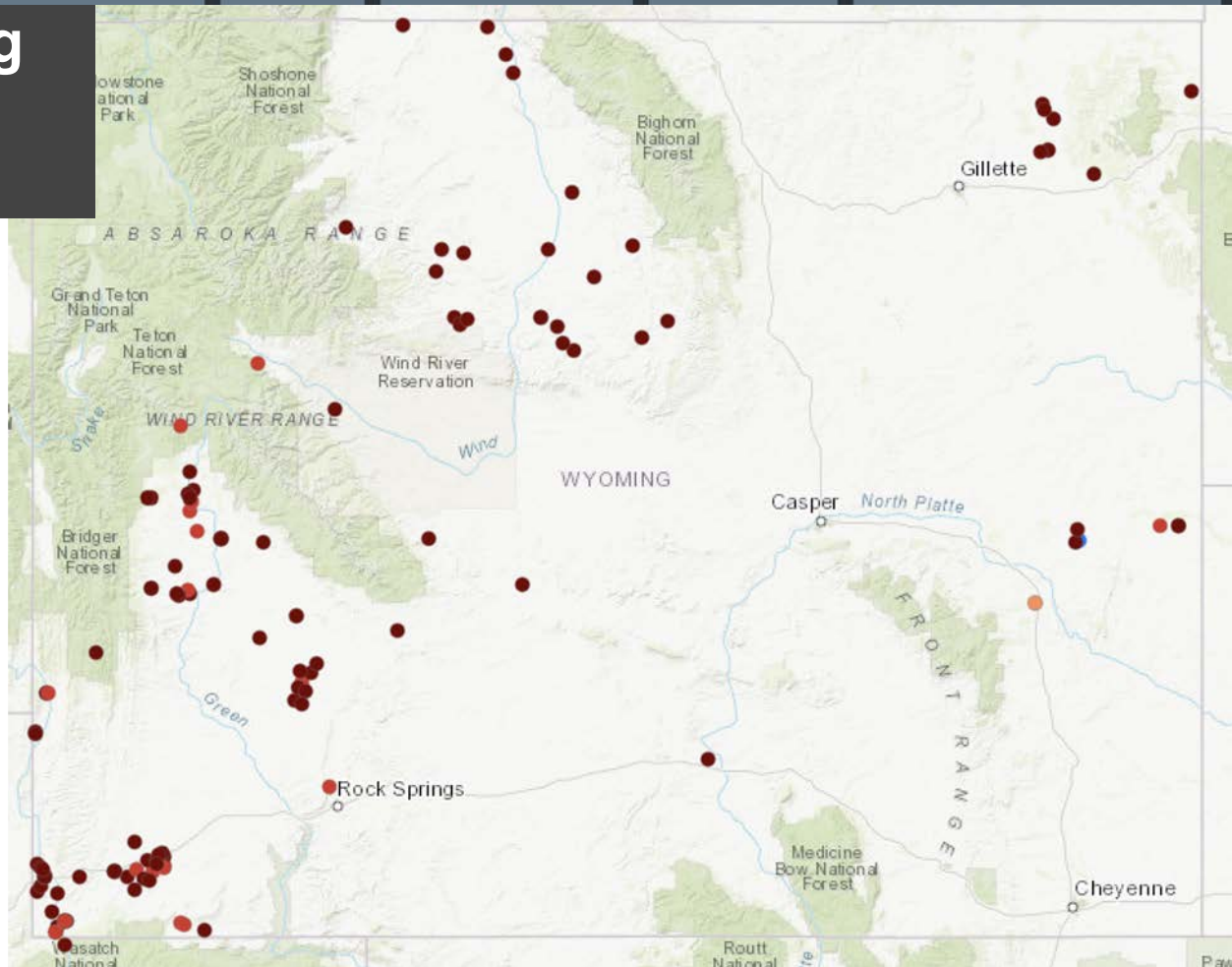
**WY Active Station Locations**



# Condition Monitoring Observer Reports

<https://bit.ly/CMOReports>

- Severely Dry
- Moderately Dry
- Mildly Dry
- Near Normal
- Mildly Wet
- Moderately Wet
- Severely Wet



# Condition Monitoring Observer Reports

<https://bit.ly/CMOReports>

- Comparison photos → resource conditions
- Regular reporting is helpful (e.g., monthly)
- **Note:** Reports and photos are available to the public.

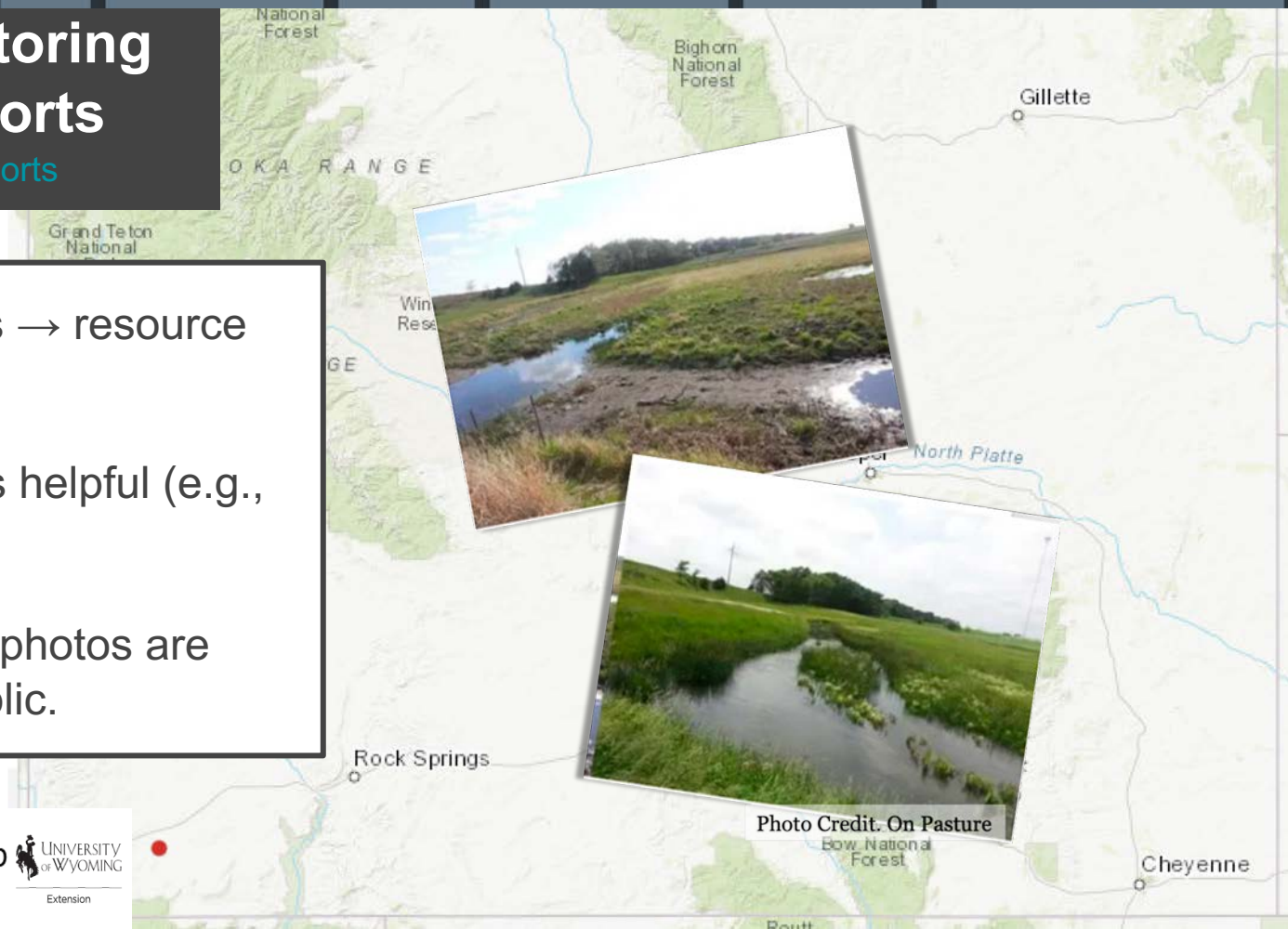


Photo Credit. On Pasture





## **Tony Bergantino**

WRDS & State Climate Office

[antonius@uwyo.edu](mailto:antonius@uwyo.edu)

## **Windy Kelley**

USDA NPCH & UW-Extension

[wkelly1@uwyo.edu](mailto:wkelly1@uwyo.edu)

## **Aaron Fiaschetti**

USGS

[afiaschetti@usgs.gov](mailto:afiaschetti@usgs.gov)

## **Susan Sanders**

National Weather Service Rapid  
City

[susan.sanders@noaa.gov](mailto:susan.sanders@noaa.gov)

## **WY Drought Info & Resources**

<https://drought.wyo.gov>

## **CoCoRaHS**

<https://www.cocorahs.org>

## **Condition Monitoring Observer Reports (CMOR)**

<https://bit.ly/CMORreports>

# Thank you! Questions?