



Farm Production and Conservation

Farm Service Agency

Farm Programs

1400 Independence Ave. SW Stop 0517 Washington, DC 20250-0517

Phone (202) 720-7641

August 18, 2021

TO: State Executive Director(s)

Idaho Montana Wyoming

FROM: Safety Net Division (SND)

SUBJECT: Secretarial Disaster Designation S5044

Please carefully review the following information concerning the subject disaster designation:

Secretarial Designation Number:	S5044
Approval date by the Secretary:	08/13/2021
Termination Date - EM loan applications:	04/13/2022
Beginning date – Incident period: <small>(For determining EM loan security values)</small>	06/22/2021
Crop Year(s) Affected:	2021
Disaster description:	Drought (Fast Track)

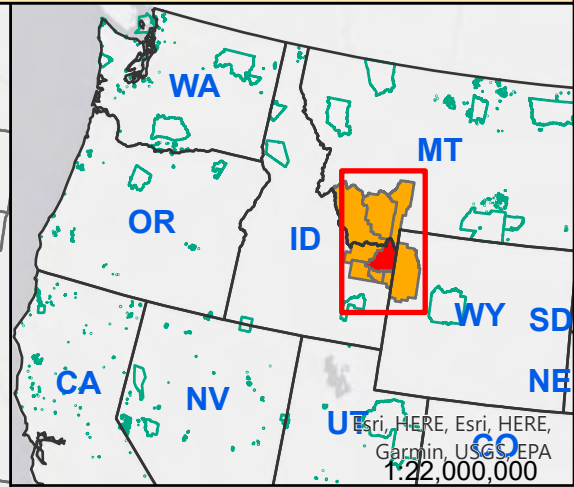
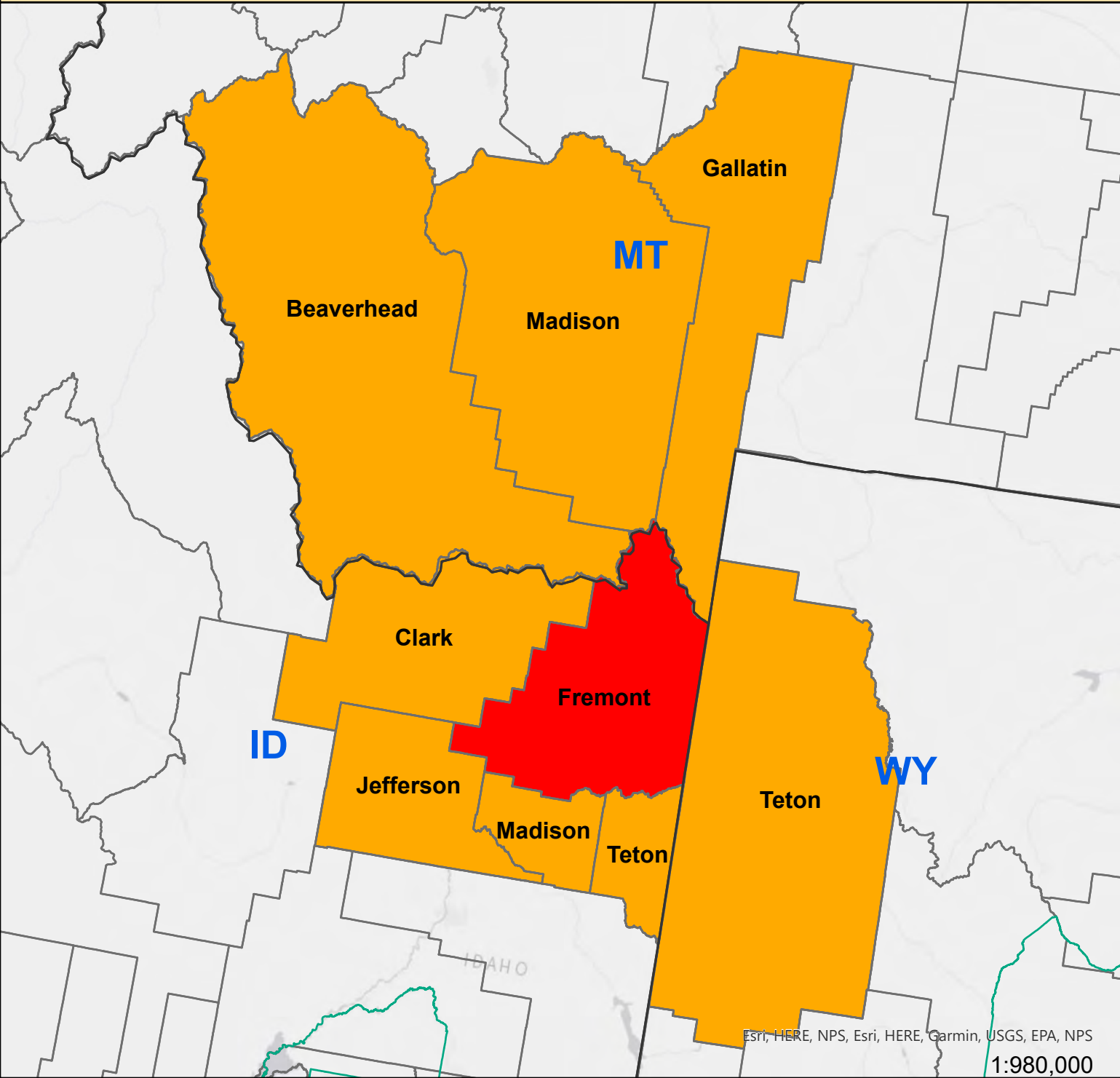
[Complete List of Primary Counties, Contiguous Counties, and Adjacent States, are in the attached ADDENDUM]

Please proceed to take the appropriate actions required by 7 CFR 759.

EXPIRATION DATE: August 31, 2022

FILING INSTRUCTIONS
Farm Loan Programs

2021 Fast Track Drought Designations - ID 8755502



Fast Track Drought Designations August 12, 2021

- State Boundary
- Tribal Lands
- County Boundary
- Primary Counties: 1
- Contiguous Counties: 8



United States Department of Agriculture
Farm Service Agency
Program Delivery/Safety Net
Washington, DC
August 12, 2021

List of Primary and Contiguous Counties

St/Co FIPS Code	Primary	STATE	St/Co FIPS Code	Contiguous	STATE
16043	Fremont	Idaho	16033	Clark	Idaho
			16051	Jefferson	Idaho
			16065	Madison	Idaho
			16081	Teton	Idaho
			30001	<i>Beaverhead</i>	<i>Montana</i>
			30031	Gallatin	Montana
			30057	Madison	Montana
			56039	<i>Teton</i>	<i>Wyoming</i>

SECRETARIAL DESIGNATION REQUEST

Primary State: Idaho

1 primary county(ies)

REPORT DATE: Thursday August 12, 2021

State	Primary	Contiguous	TOTAL
Idaho	1	4	5
Montana	-	3	3
Wyoming	-	1	1
TOTALS	1	8	9
TOTAL No. of States	1	3	3