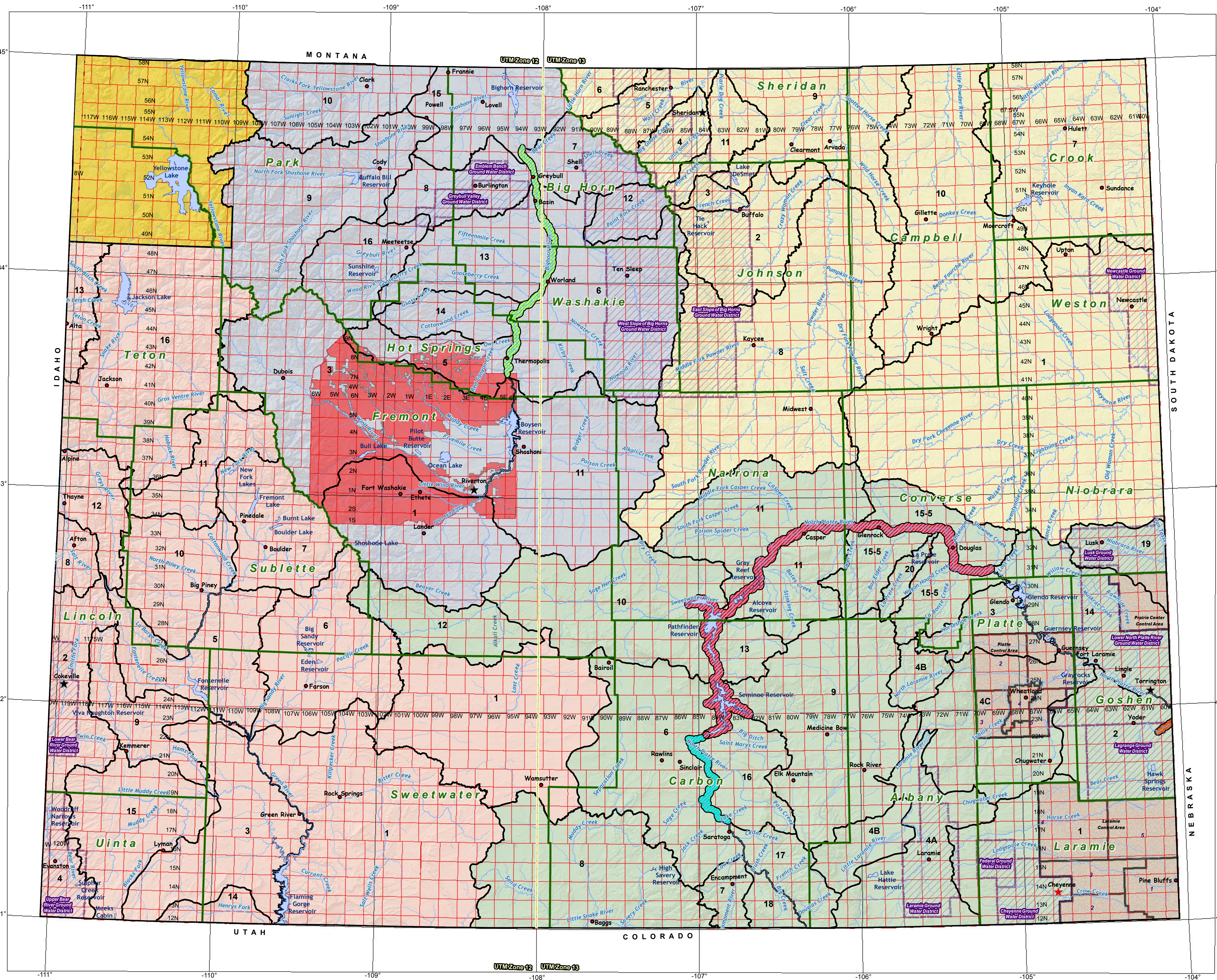
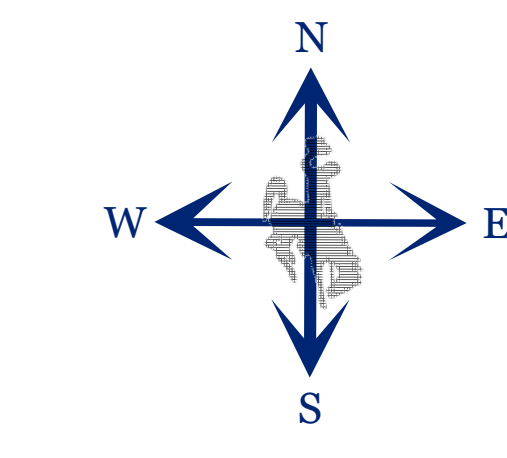


Wyoming Water Division Map



- ★ Cheyenne-State Engineer Headquarters
- ★ Torrington-Division 1 Headquarters
- ★ Sheridan-Division 2 Headquarters
- ★ Riverton-Division 3 Headquarters
- ★ Cokeville-Division 4 Headquarters
- Water bodies
- Hydrology
- County_bdy
- Water Division 1, District 2 Diversions from mainstem of Horse Creek
- Water Division 1, District 14 - Diversions from mainstem of the North Platte River downstream of Seminoe Reservoir inflow
- Water Division 1, District 17 - Diversions from mainstem of the North Platte River upstream of Seminoe Reservoir inflow
- Water Division 3, District 3 - Diversions from mainstem of the Bighorn river to the confluence of Bear Creek
- Township & Range
- Wind River Indian Reservation boundary
- Water Division 1
- Water Division 2
- Water Division 3
- Water Division 4
- Yellowstone National Park
- SEO district boundaries

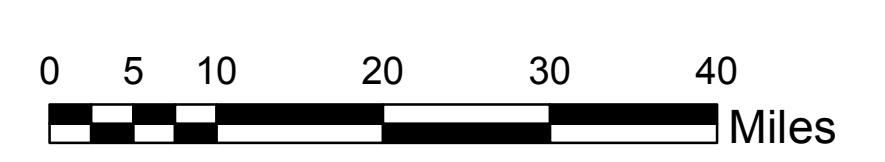
*Division 1, District 4: A, B, and C designation only for hydrographer/commission point of contact NOT sub-districts of District 4



Created: February 2015

Coordinate System: NAD 1983 StatePlane Wyoming East Central FIPS 4902 Feet
 Projection: Transverse Mercator
 Datum: North American 1983
 False Easting: 1,312,333.3333
 False Northing: 328,083.3333
 Central Meridian: -107.3333
 Scale Factor: 0.9999
 Latitude Of Origin: 40.5000
 Units: Foot US

1 in = 12 miles



This GIS map was created by the Wyoming State Engineer's Office and was designed for the use and convenience of the public. This map was prepared from records in the Wyoming State Engineer's Office and may or may not reflect the actual situation on the ground. The State does not warrant the accuracy of this map, and no decision involving a risk of economic loss or physical injury should be made in reliance thereon.

